

2/1 Page

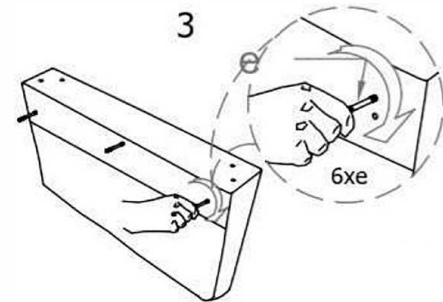
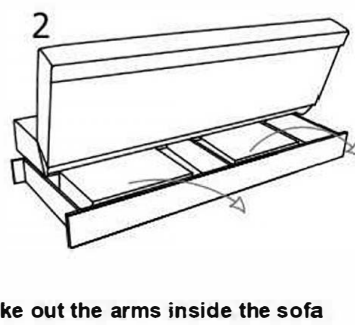
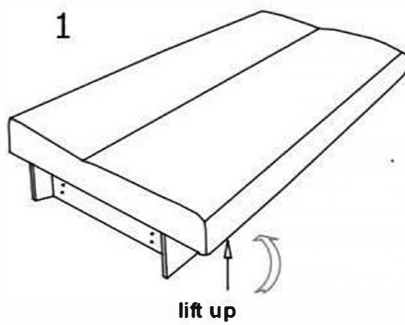
ASSEMBLY INSTRUCTION

Thank you for purchasing this quality product. Be sure to check all packing material carefully for small parts that may have come loose inside the carton during shipment.

PART LIST:

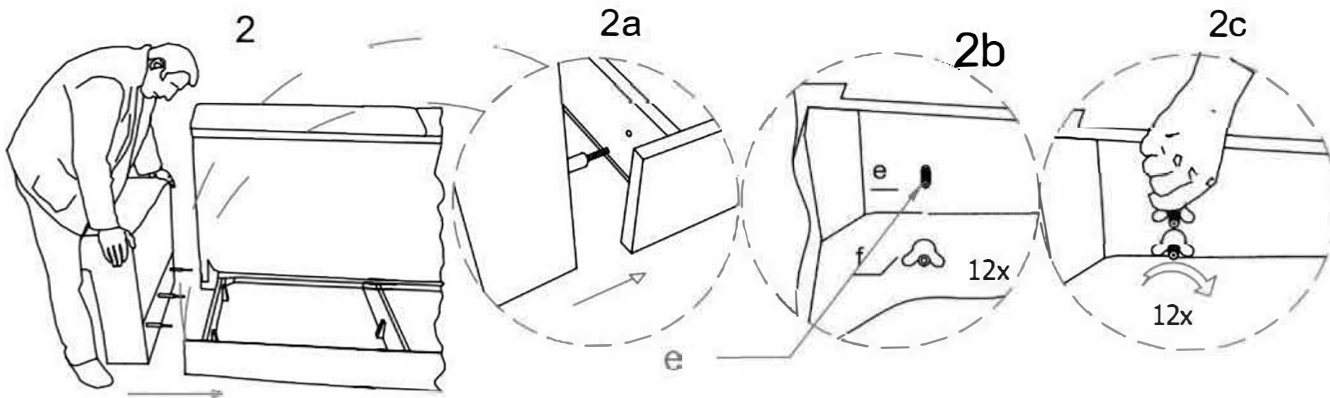
A: 	B: 	C: 	D: 	E: 	F: 
Feet 6 PCS	Hidden Feet 9 PCS	Screw 24*4 cm	Long Connection Apparatus 3 PCS	Connection Apparatus 6 PCS	Crimping Apparatus 12 PCS

1. PROCEDURE



Attach The Apparatus To The Places Shown
Rotate And Squeeze

2. PROCEDURE

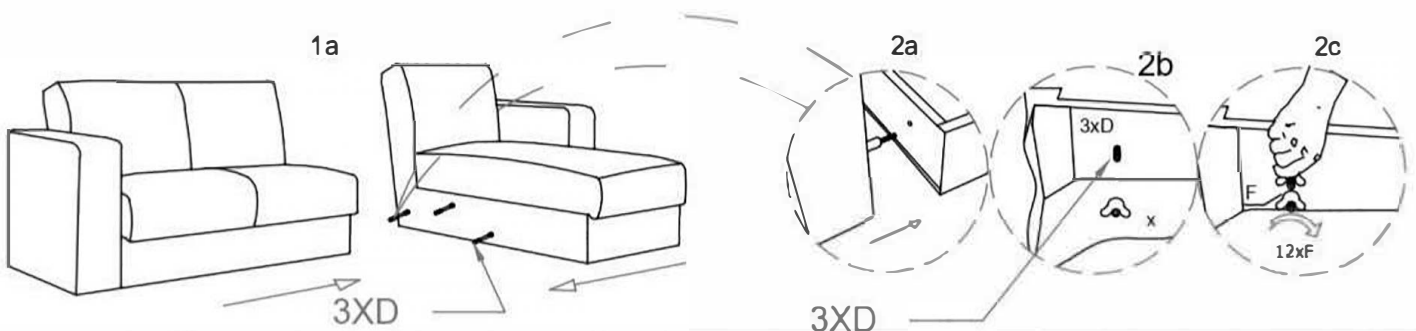


Attach the Arm to the Sofa

Pass The Apparatus Through The Hole

Apparatus clamping

3. PROCEDURE

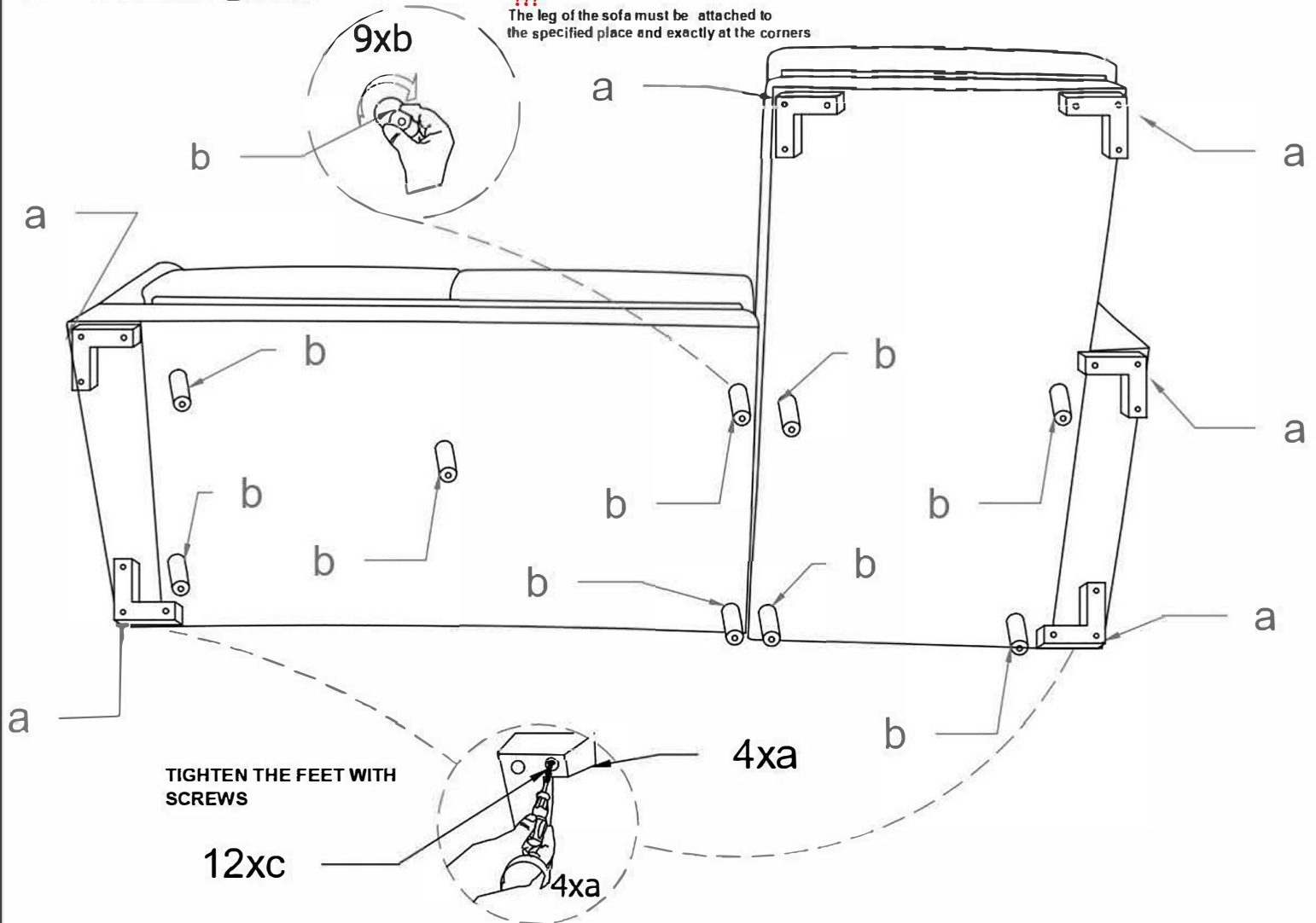


4. PROCEDURE

WARNING

!!!

The leg of the sofa must be attached to the specified place and exactly at the corners



WARNING !!!

Attach All The Feet And Lift The Product

5. PROCEDURE

SEAT READY TO USE

