

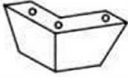





ASSEMBLY INSTRUCTION

418-000002

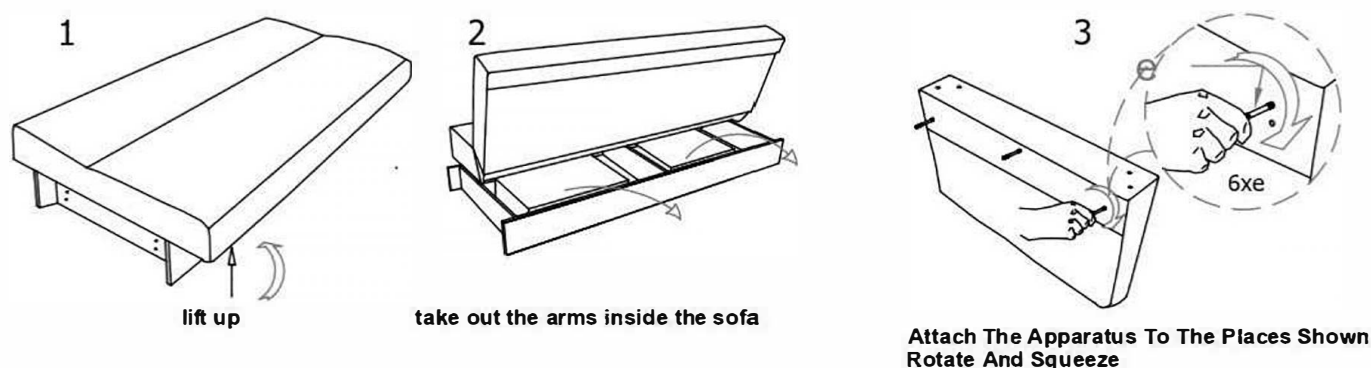
2/1 Page

Thank you for purchasing this quality product. Be sure to check all packing material carefully for small parts that may have come loose inside the carton during shipment.

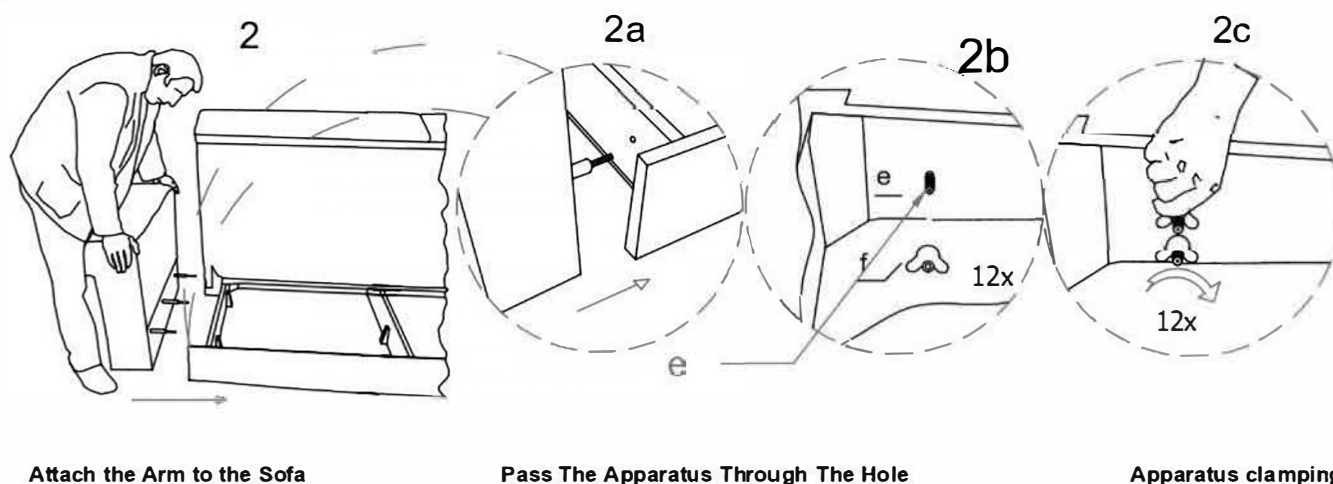
PART LIST:

A:		B:		C:		D:		E:		F:	
	Feet 6 PCS		Hidden Feet 8 PCS		Screw 24*3 cm		Long Connection Apparatus 3 PCS		Connection Apparatus 6 PCS		Crimping Apparatus 12 PCS

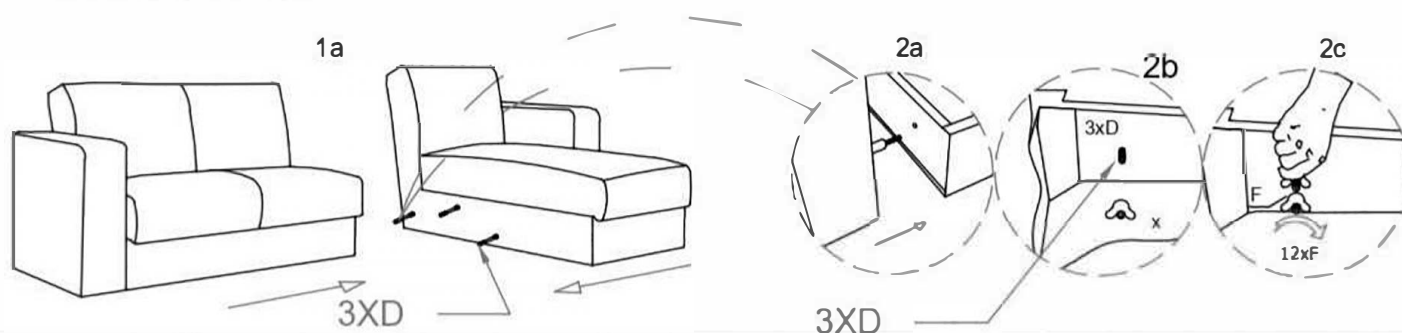
1. PROCEDURE



2. PROCEDURE



3. PROCEDURE

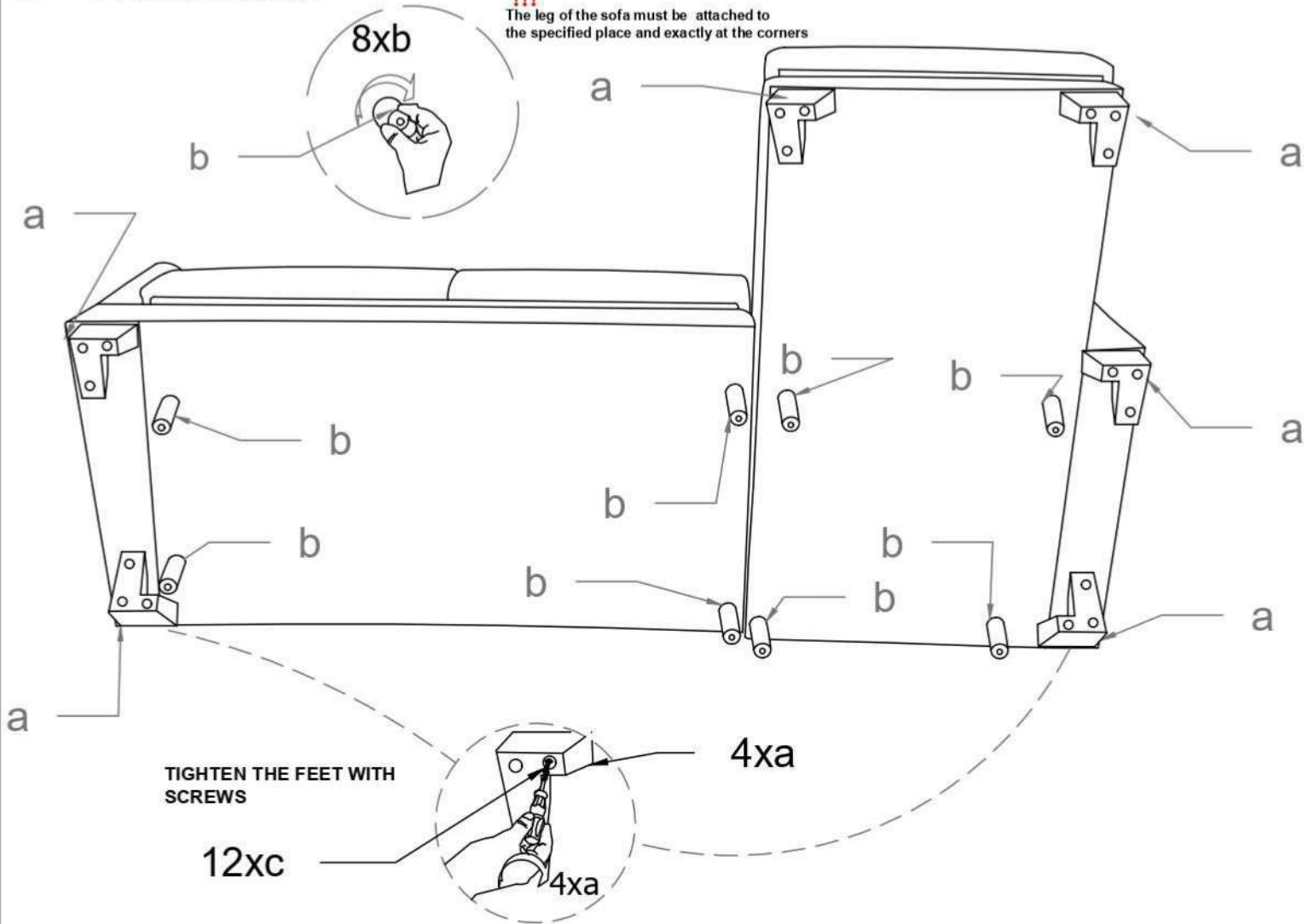


4. PROCEDURE

WARNING

!!!

The leg of the sofa must be attached to the specified place and exactly at the corners



WARNING !!!

Attach All The Feet And Lift The Product

5. PROCEDURE

SEAT READY TO USE

