

# ASSEMBLY INSTRUCTIONS

## 383-000069

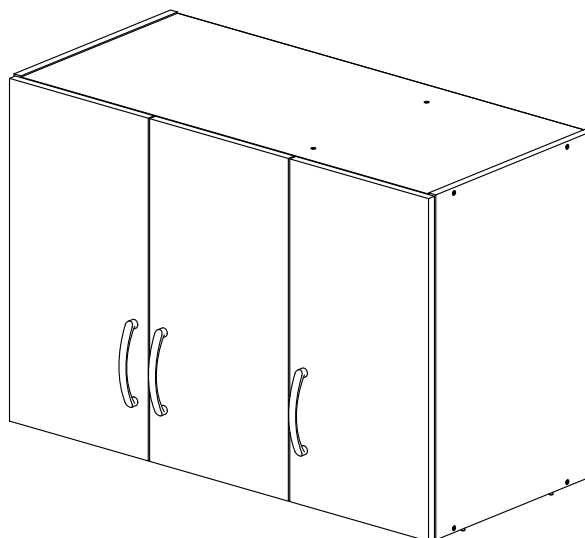


**IMPORTANT**

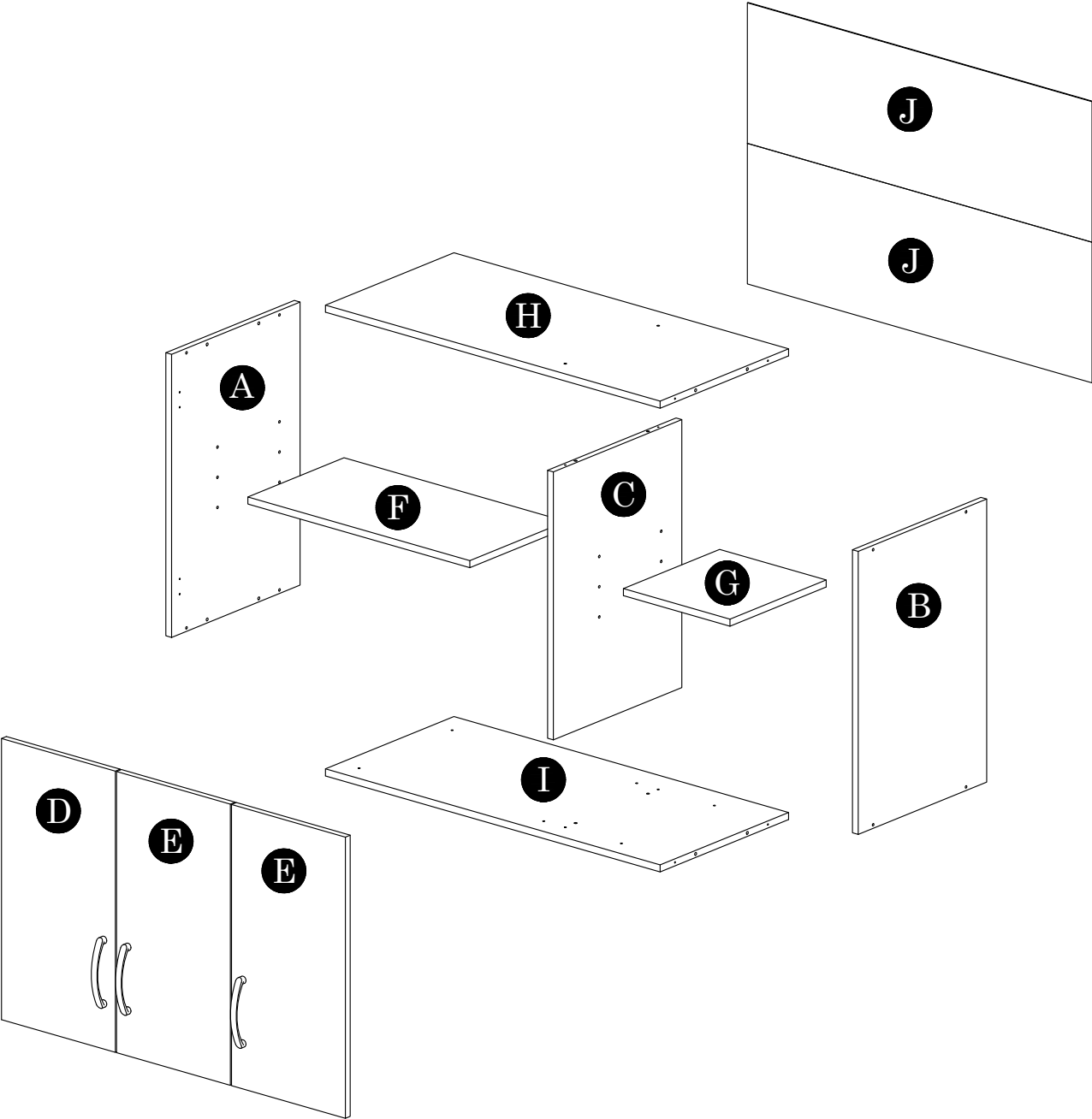
**PLEASE READ BEFORE YOU CONTINUE FURTHER**

1. MATERIAL USE LAMINATED PARTICLE BOARD, TO CLEAN USE SOFT, DRY CLOTH.
2. DO NOT USE DETERGENT OR CHEMICAL AVOID CONTACT WITH WATER AND DIRECT SUNLIGHT.
3. TO BE ASSEMBLED ON A SOFT, DRY, CLEAN SMOOTH SURFACE.
4. DO NOT USE ANY TOOLS OTHER THAN THOSE SHOWN.
5. USE OF POWER TOOLS TO ASSEMBLE THIS PRODUCT WILL INVALIDATE ANY CLAIM AND MAY DAMAGE THIS PRODUCT MAKING IT UNSAFE.
6. BEFORE STARTING ASSEMBLY PLEASE VERIFY IF ALL PARTS AND HARDWARE ARE INCLUDED.

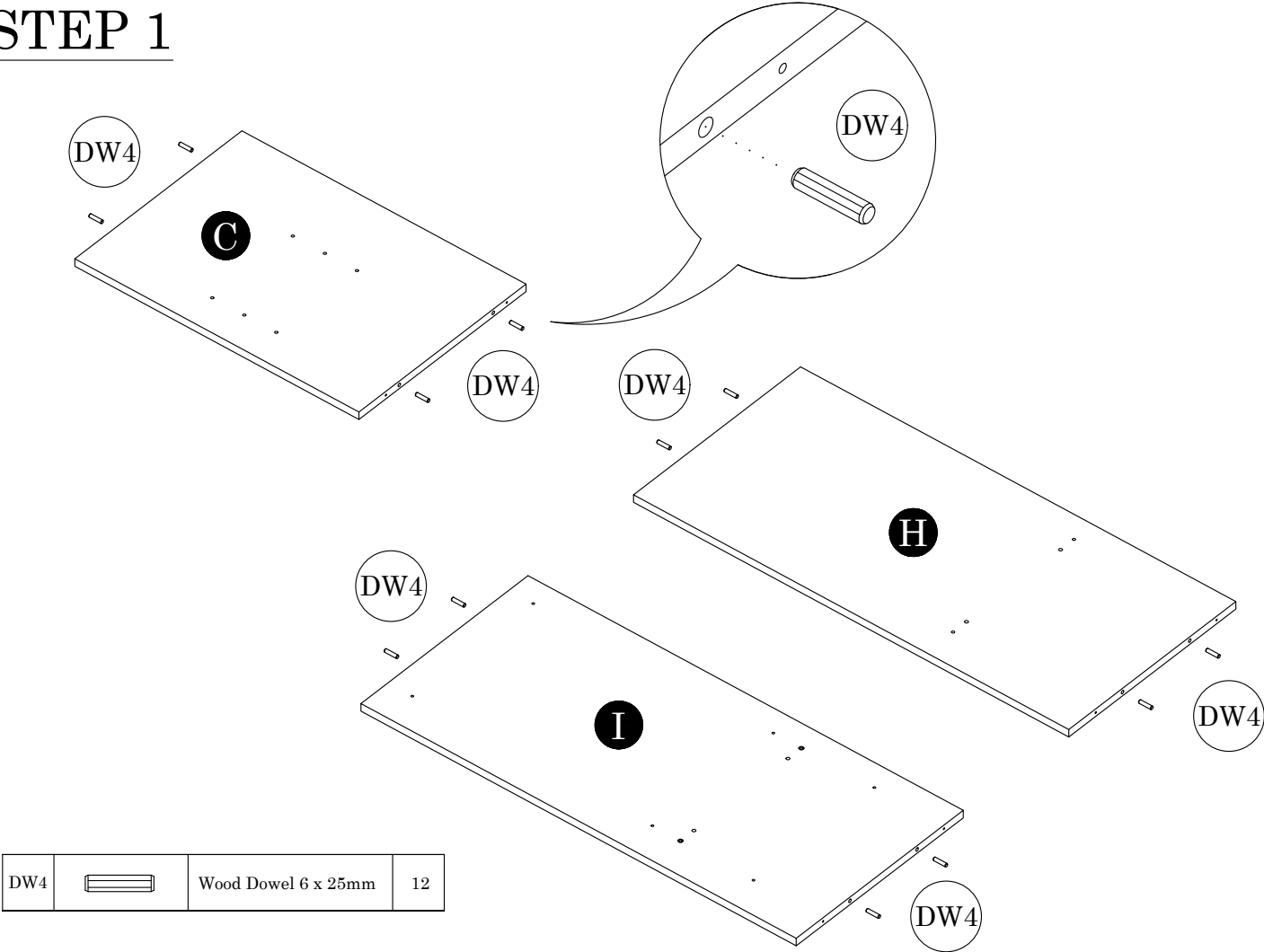
HARDWARE LIST			QTY (pcs)
DH4		Soft Closing Hinges 2/8	2 Sets
DH5		Soft Closing Hinges 5/8	4 Sets
DW4		Wood Dowel 6 x 25mm	16
HD6		Plastic Handle 128mm	3
MF2		Nail	30 (+3)
SC3		Screw M3.5 x 14mm	36
SC11		Screw M4 x 25mm	6
SC13		Screw M4 x 30mm	6
SC25		FH Screw M5 x 40mm	12
SH4		Plastic Shelf Support with Steel Pin	8



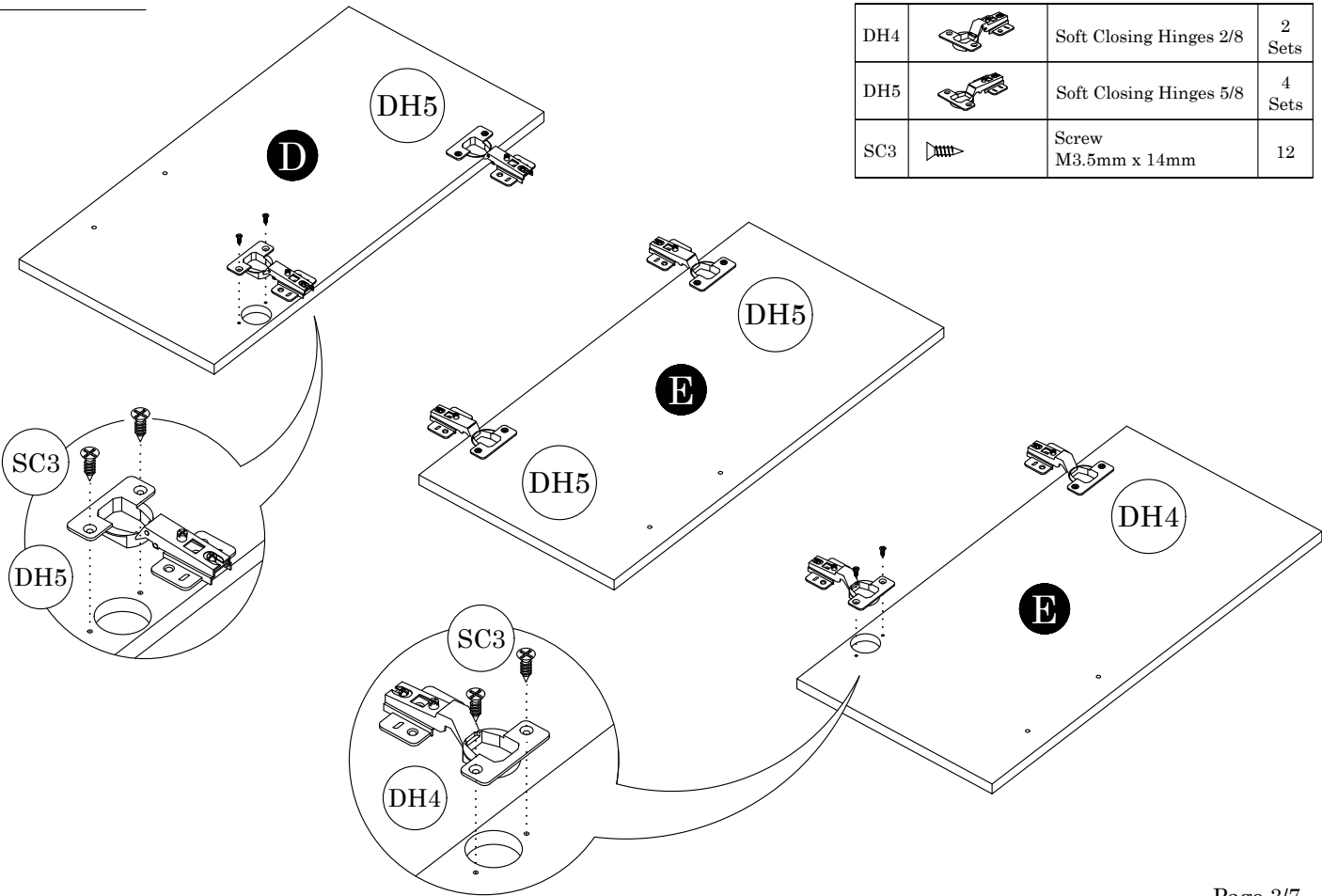
Parts List		QTY
A	Side Panel (L)	1 pc
B	Side Panel (R)	1 pc
C	Center Panel	1 pc
D	Door Panel (L)	1 pc
E	Door Panel (R)	2 pcs
F	Free Shelf Panel	1 pc
G	Small Free Shelf Panel	1 pc
H	Top Panel	1 pc
I	Bottom Panel	1 pc
J	Backboard	2 pcs



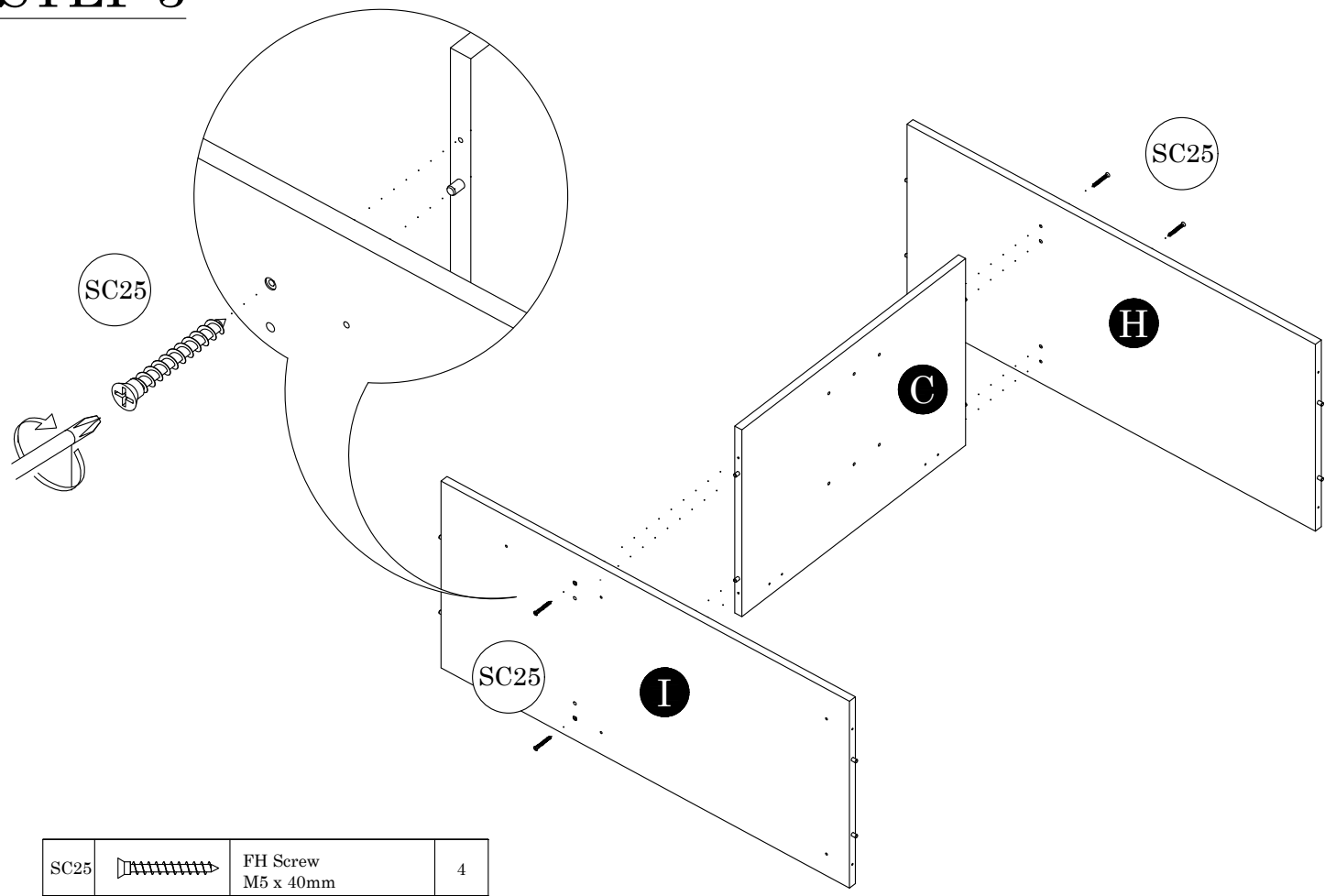
# STEP 1



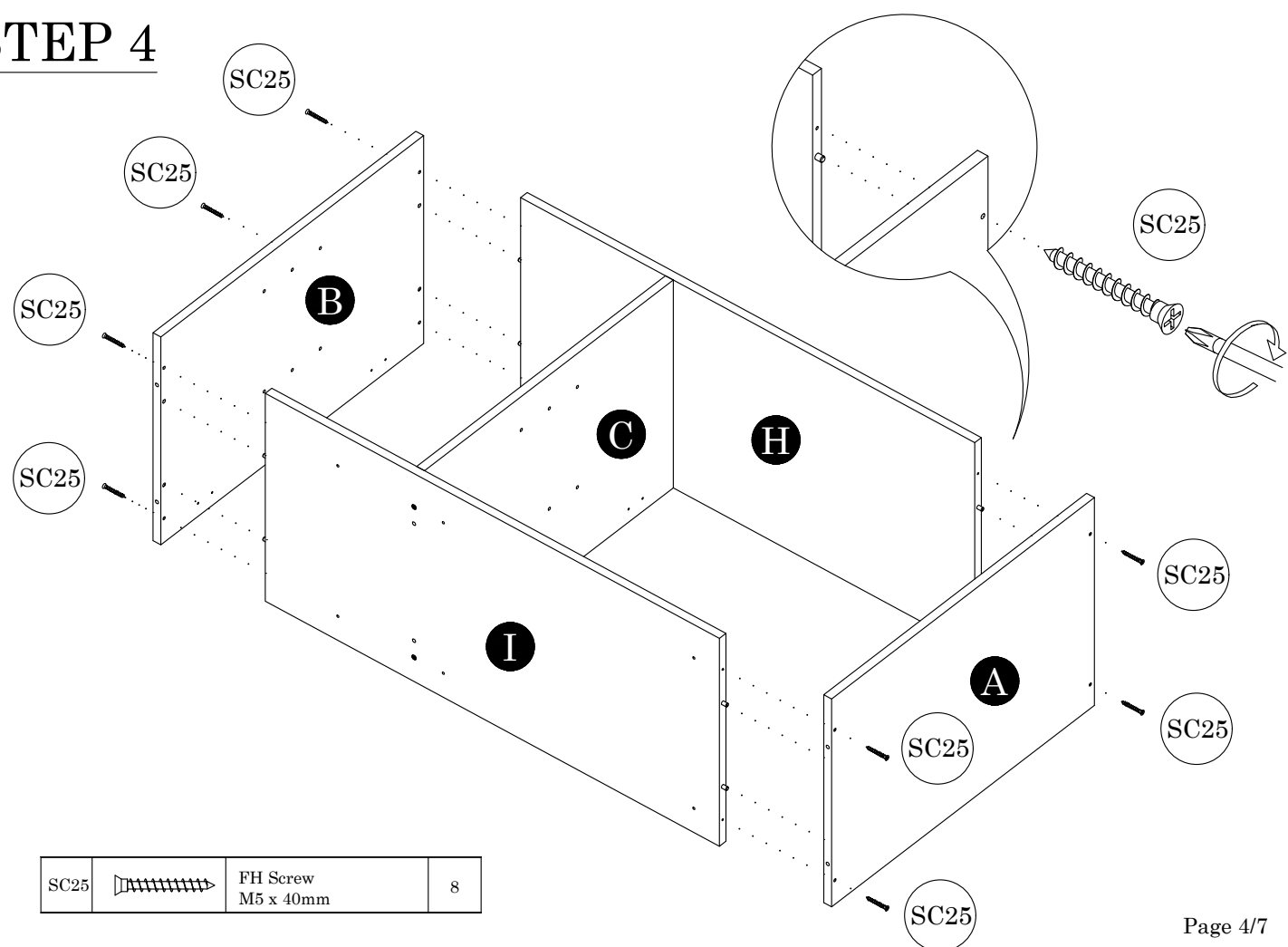
# STEP 2



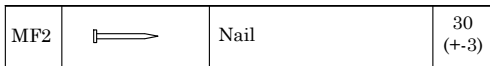
STEP 3



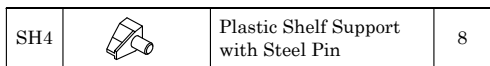
STEP 4








### STEP 5

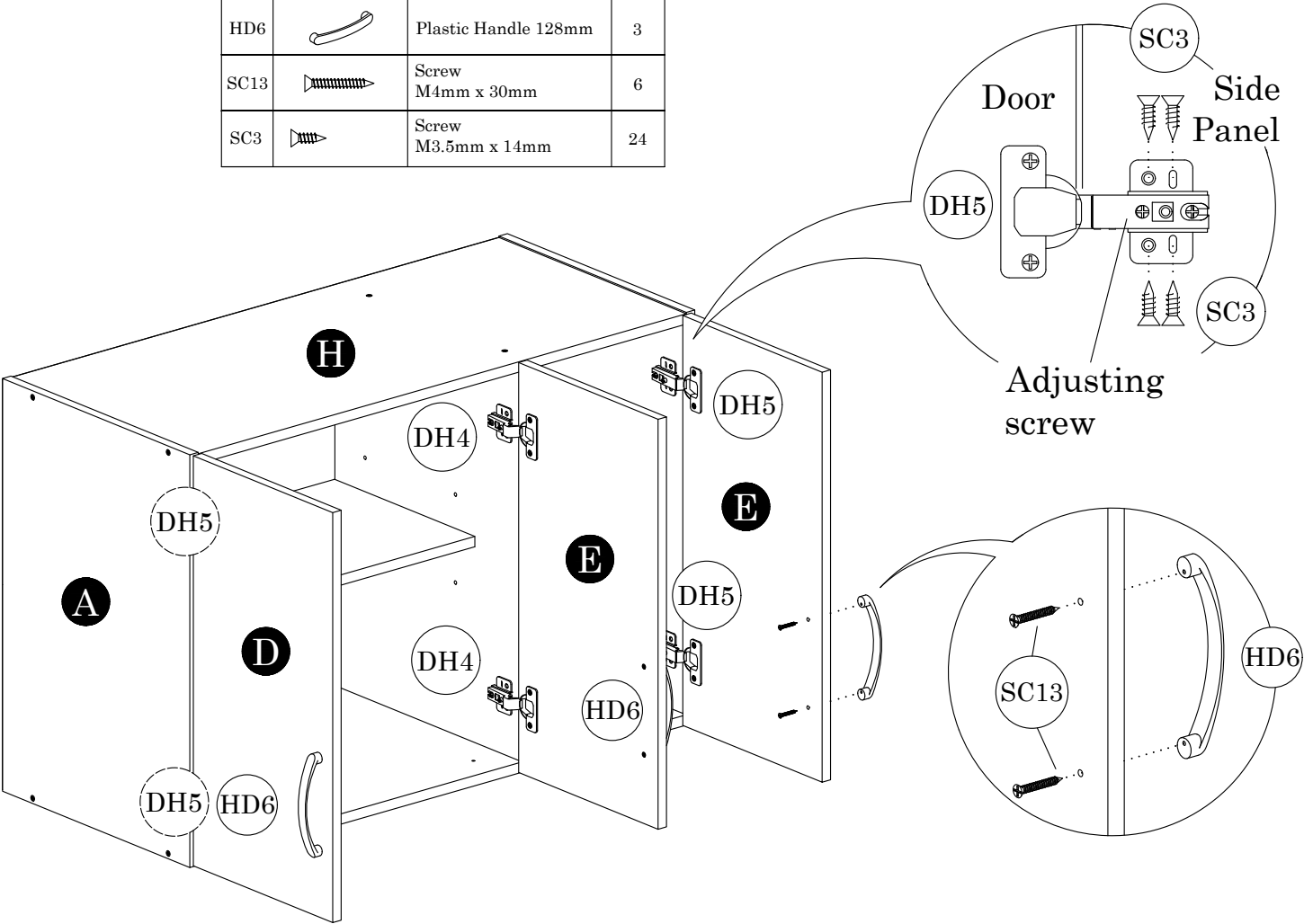


## STEP 6

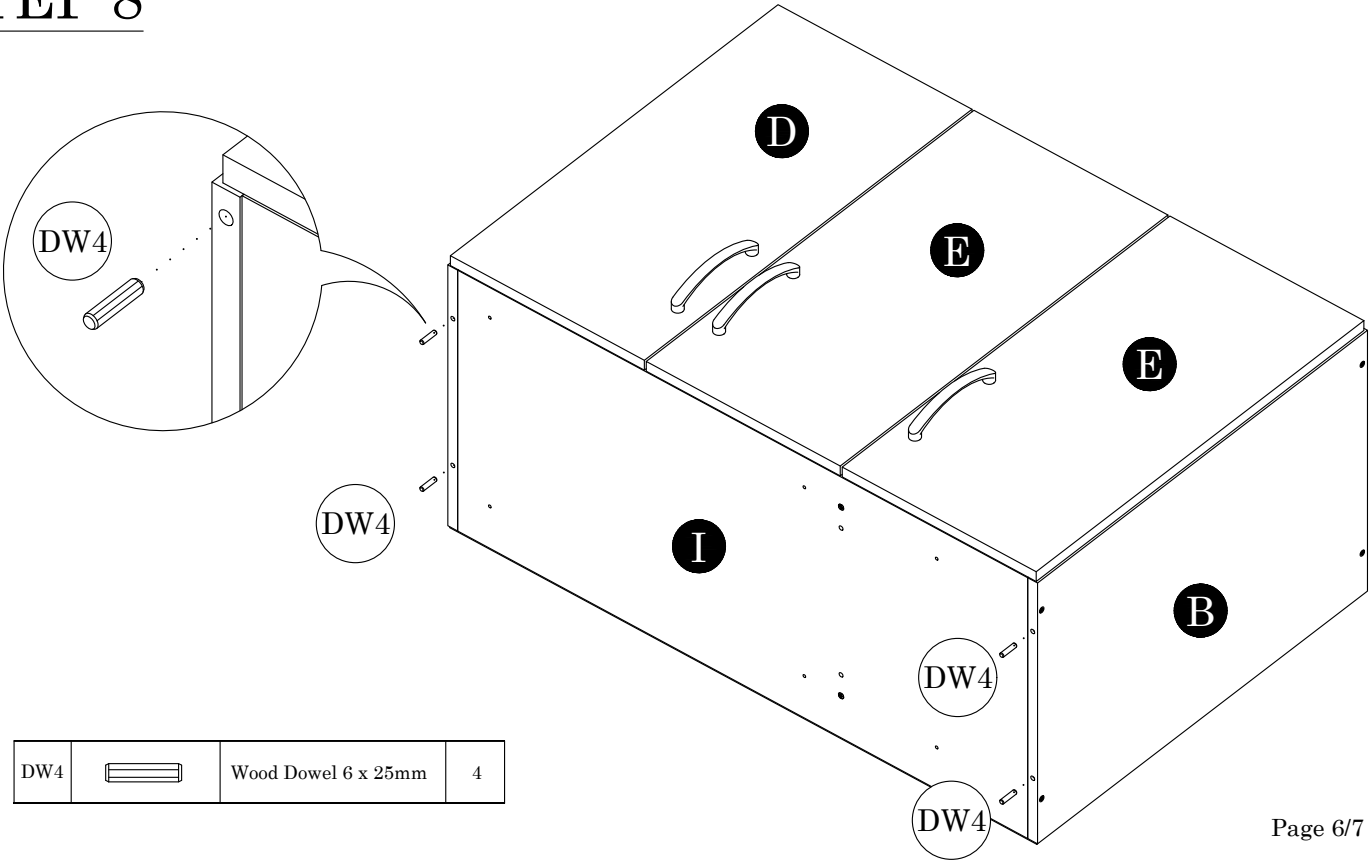


STEP 7

DH4		Soft Closing Hinges 2/8	2 Sets
DH5		Soft Closing Hinges 5/8	4 Sets
HD6		Plastic Handle 128mm	3
SC13		Screw M4mm x 30mm	6
SC3		Screw M3.5mm x 14mm	24

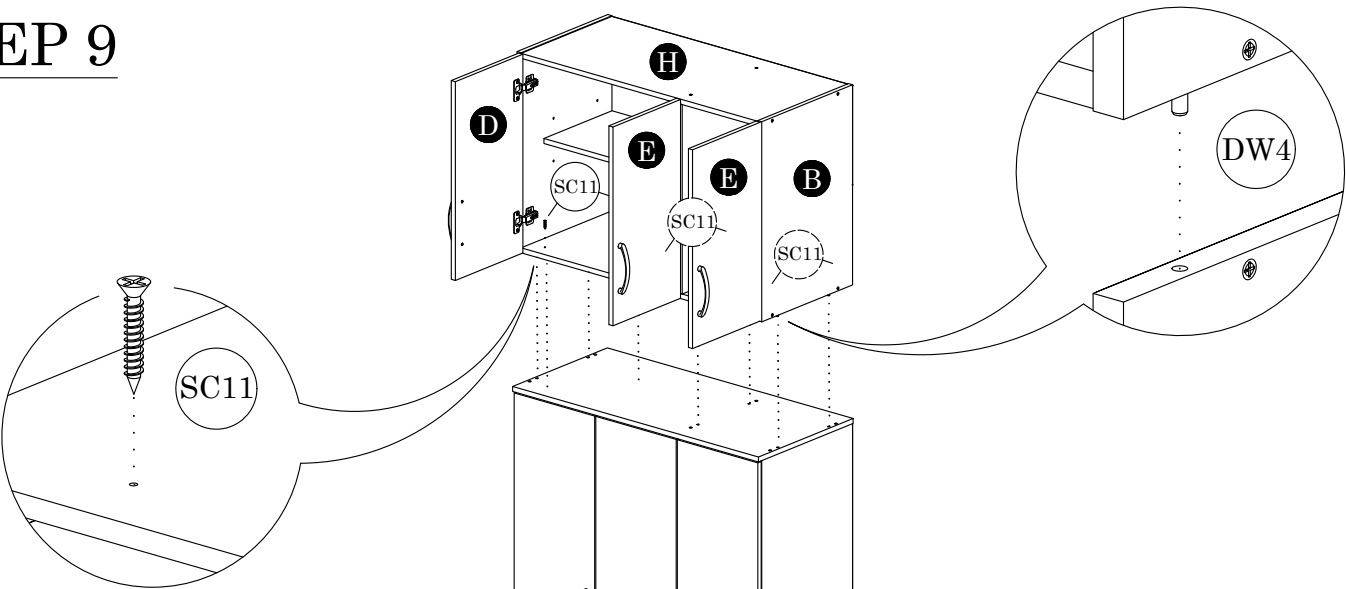


STEP 8

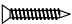


DW4		Wood Dowel 6 x 25mm	4
-----	---	---------------------	---

# STEP 9



Wardrobe →

SC11		Screw M4 x 25mm	6
------	---	--------------------	---

**HANDLE WITH CARE  
NEED 3 PERSON  
DURING ASSEMBLE  
THE FULL SETS**

# STEP 10

