

# ASSEMBLY INSTRUCTIONS

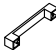
## 383-000017

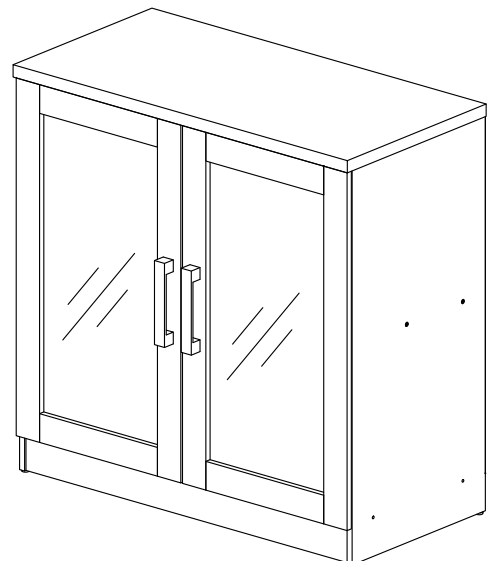


**IMPORTANT**

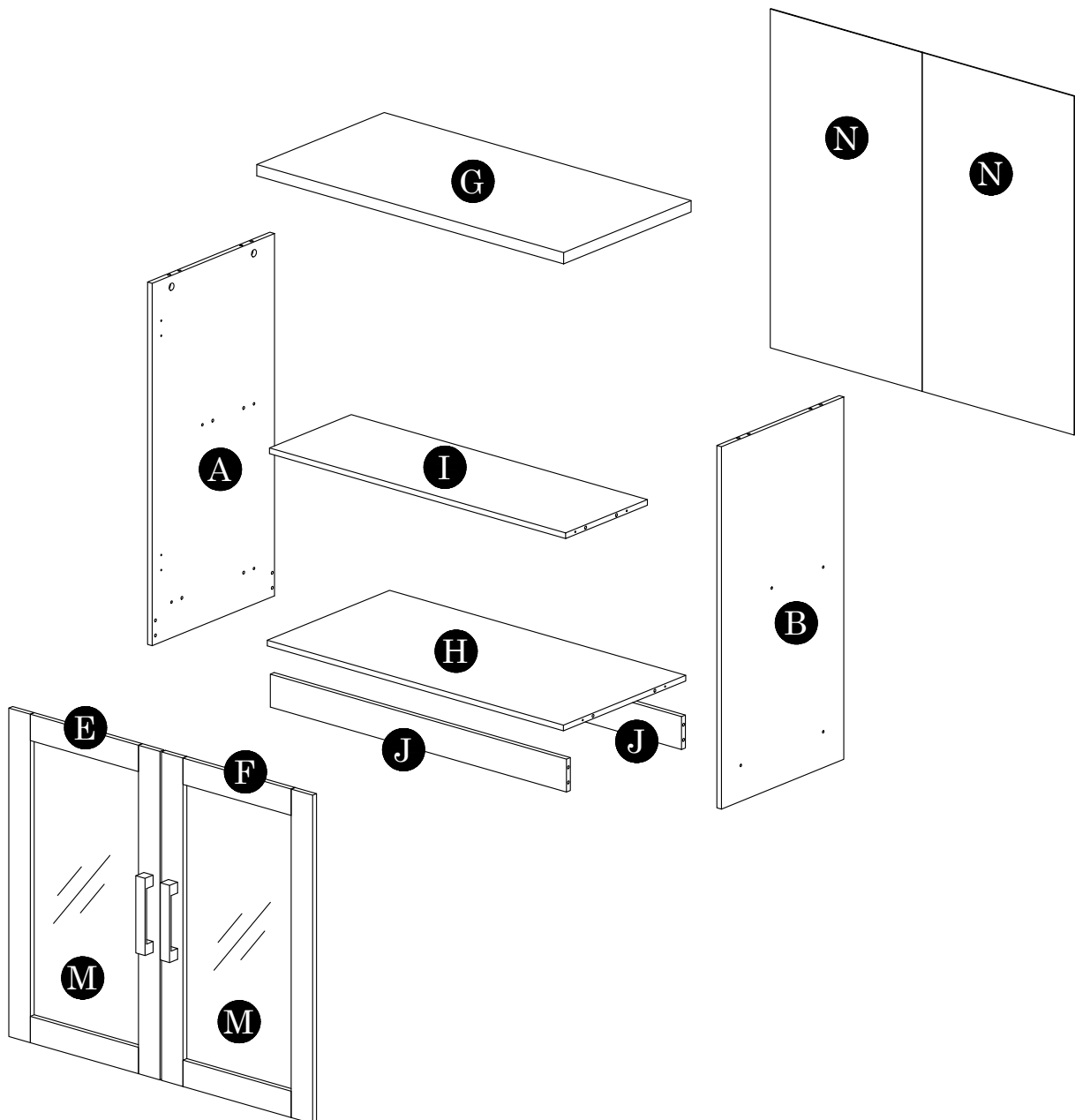
**PLEASE READ BEFORE YOU CONTINUE FURTHER**

1. MATERIAL USE LAMINATED PARTICLE BOARD, TO CLEAN USE SOFT, DRY CLOTH.
2. DO NOT USE DETERGENT OR CHEMICAL AVOID CONTACT WITH WATER AND DIRECT SUNLIGHT.
3. TO BE ASSEMBLED ON A SOFT, DRY, CLEAN SMOOTH SURFACE.
4. DO NOT USE ANY TOOLS OTHER THAN THOSE SHOWN.
5. USE OF POWER TOOLS TO ASSEMBLE THIS PRODUCT WILL INVALIDATE ANY CLAIM AND MAY DAMAGE THIS PRODUCT MAKING IT UNSAFE.
6. BEFORE STARTING ASSEMBLY PLEASE VERIFY IF ALL PARTS AND HARDWARE ARE INCLUDED.

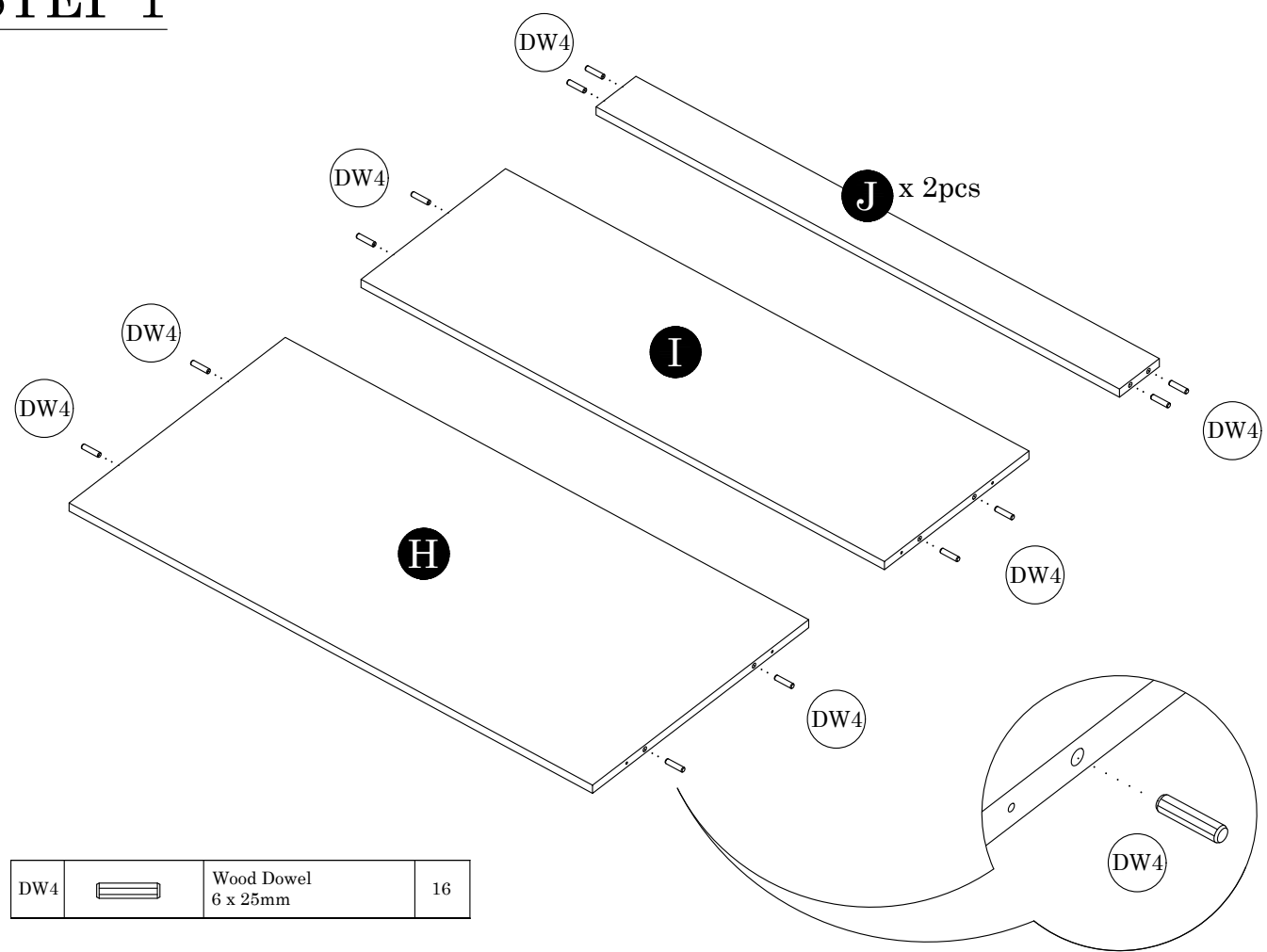
HARDWARE LIST			QTY (pcs)
DH8		Door Hinges 5/8	4
DR2		Door Stopper	1
DW4		Wood Dowel 6 x 25mm	20
HD18		Handle 128mm	2
LG1		Leg Pin	4
MF2		Nail	25 (+/-3)
MN1		Mini Fix 12mm	4 Sets
PF11		Small L Bracket	2
SC3		Screw M3.5 x 14mm	20
SC11		Screw M4 x 25mm	4
SC25		FH Screw M5 x 40mm	8



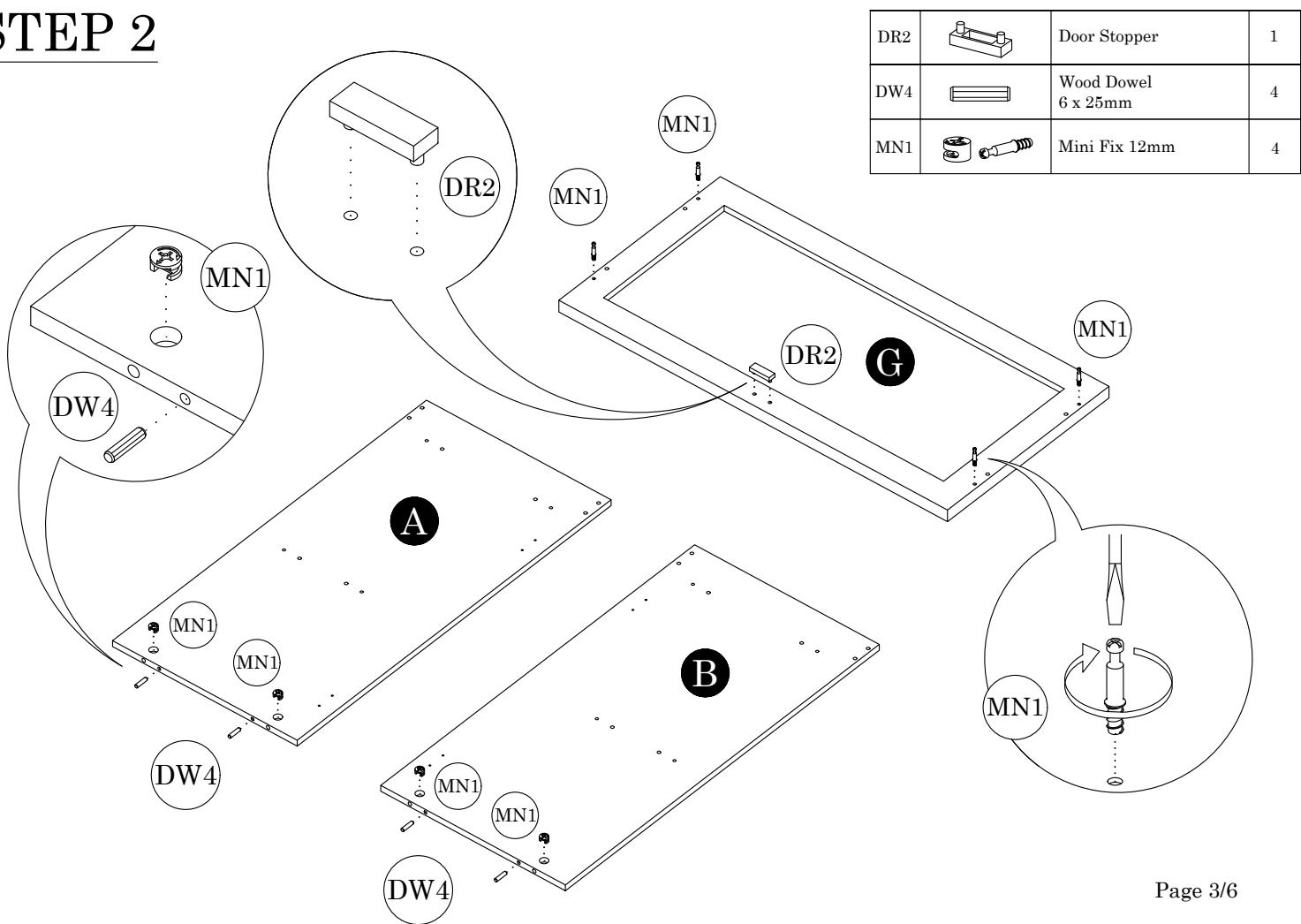
Parts List		QTY
A	Side Panel (L)	1 pc
B	Side Panel (R)	1 pc
C	Big Door Wood	4 pcs
D	Small Door Wood	4 pcs
E	Door Panel (L)	1 pc
F	Door Panel (R)	1 pc
G	Top Panel	1 pc
H	Bottom Panel	1 pc
I	Shelf Panel	1 pc
J	Bottom Crossbar	2 pcs
K	Big Wood	2 pcs
L	Small Wood	2 pcs
M	Glass	2 pcs
N	Backboard	2 pcs





STEP 1

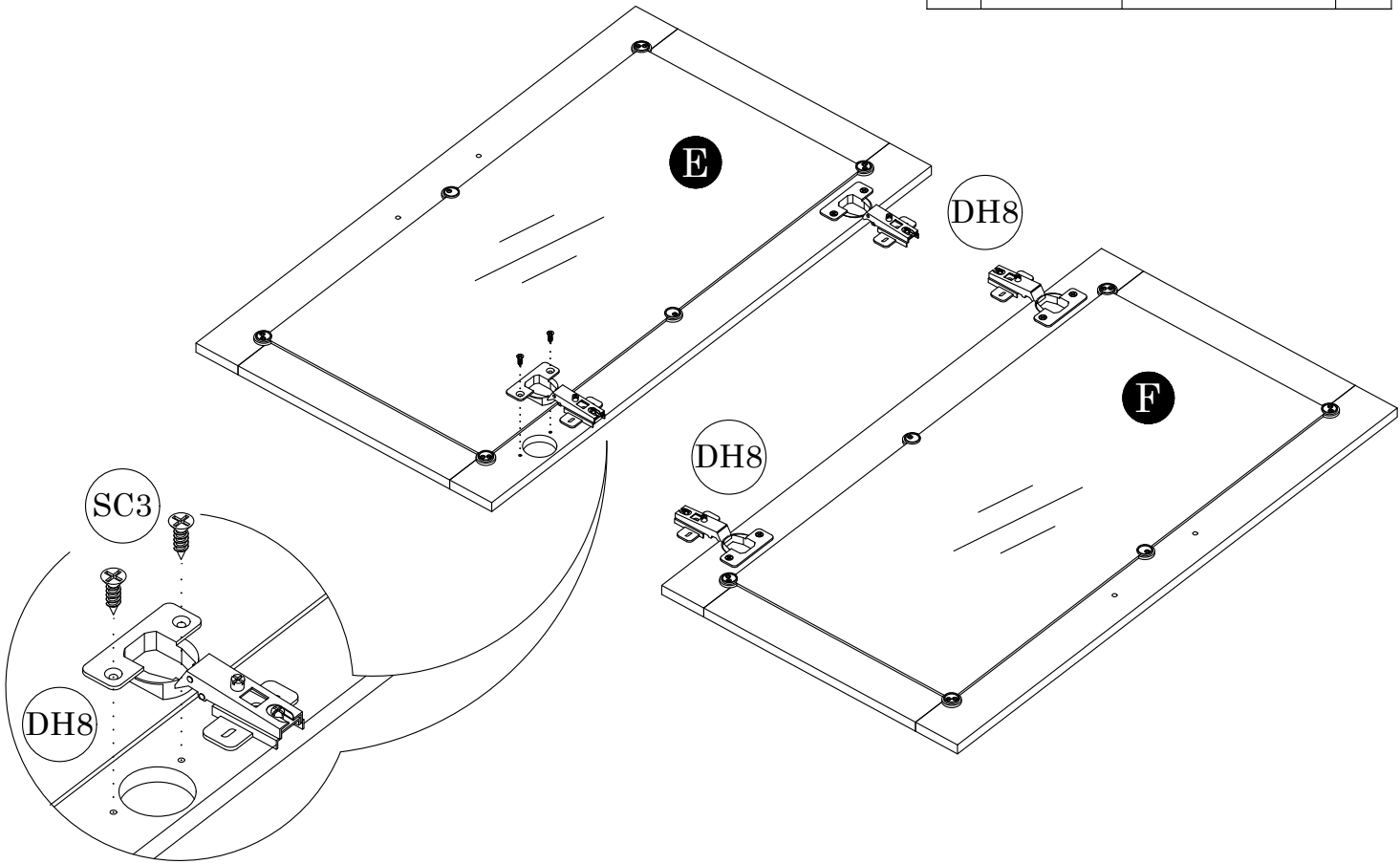


STEP 2

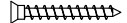


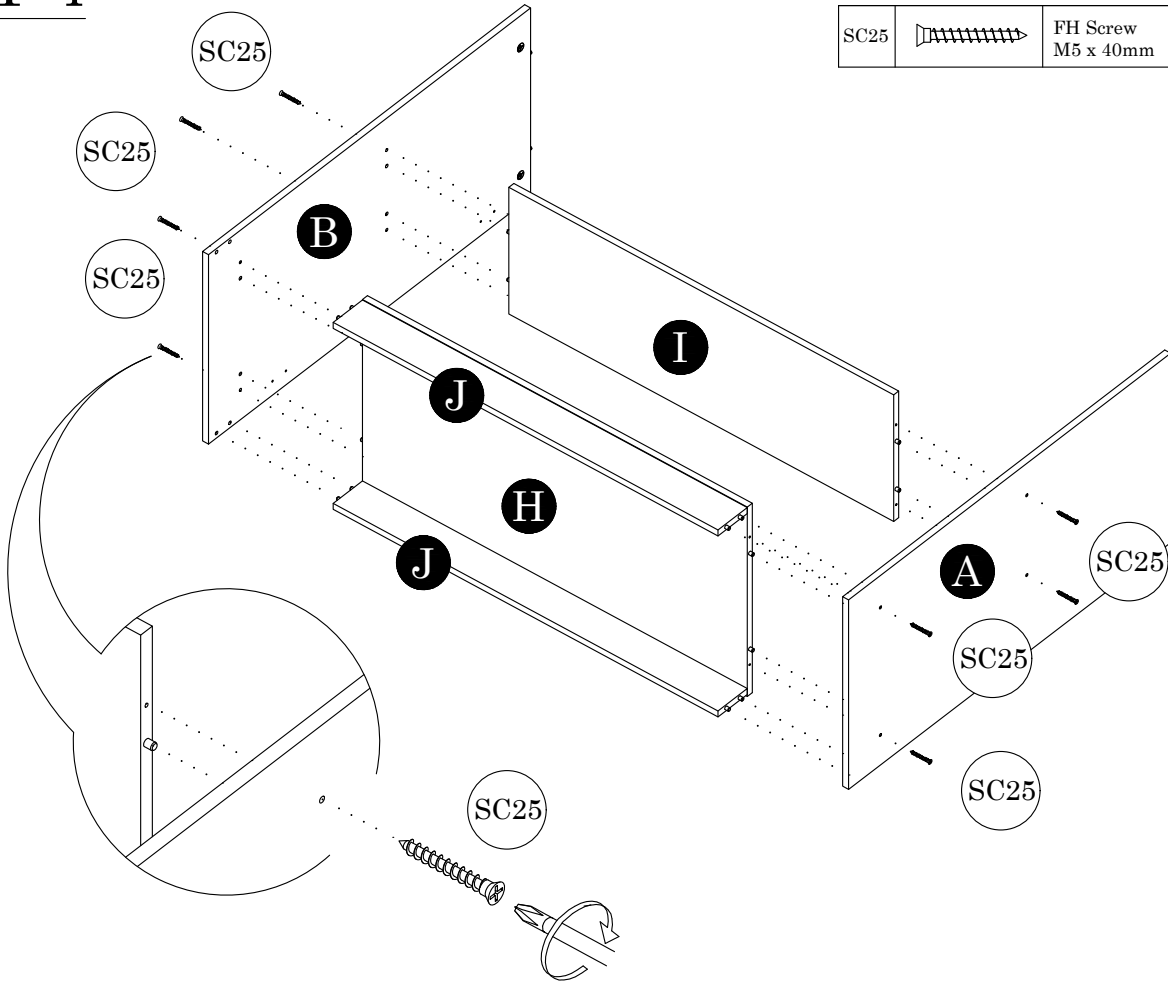
STEP 3

DH8		Door Hinges 5/8	4
SC3		Screw M3.5mm x 14mm	8

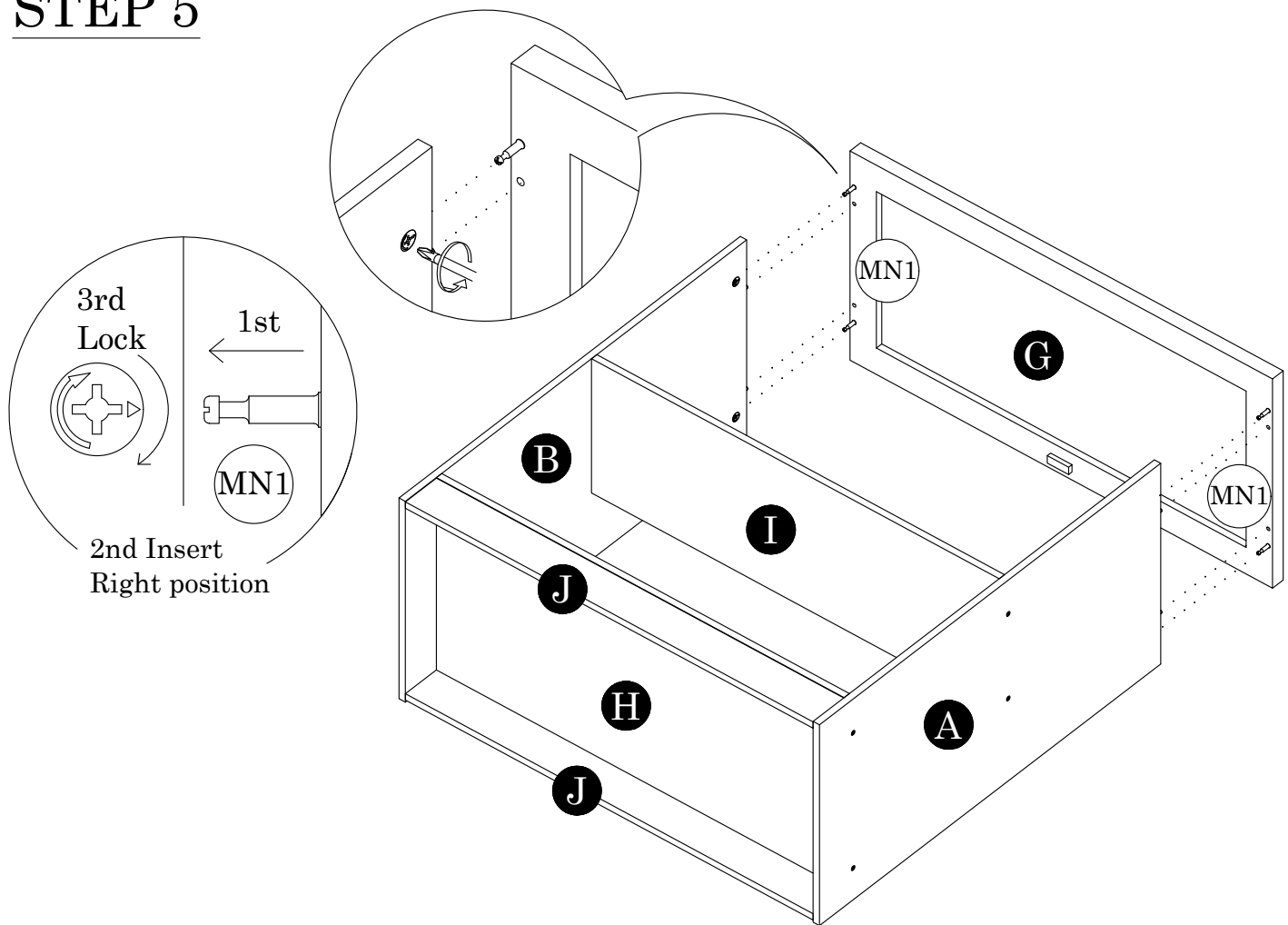


STEP 4

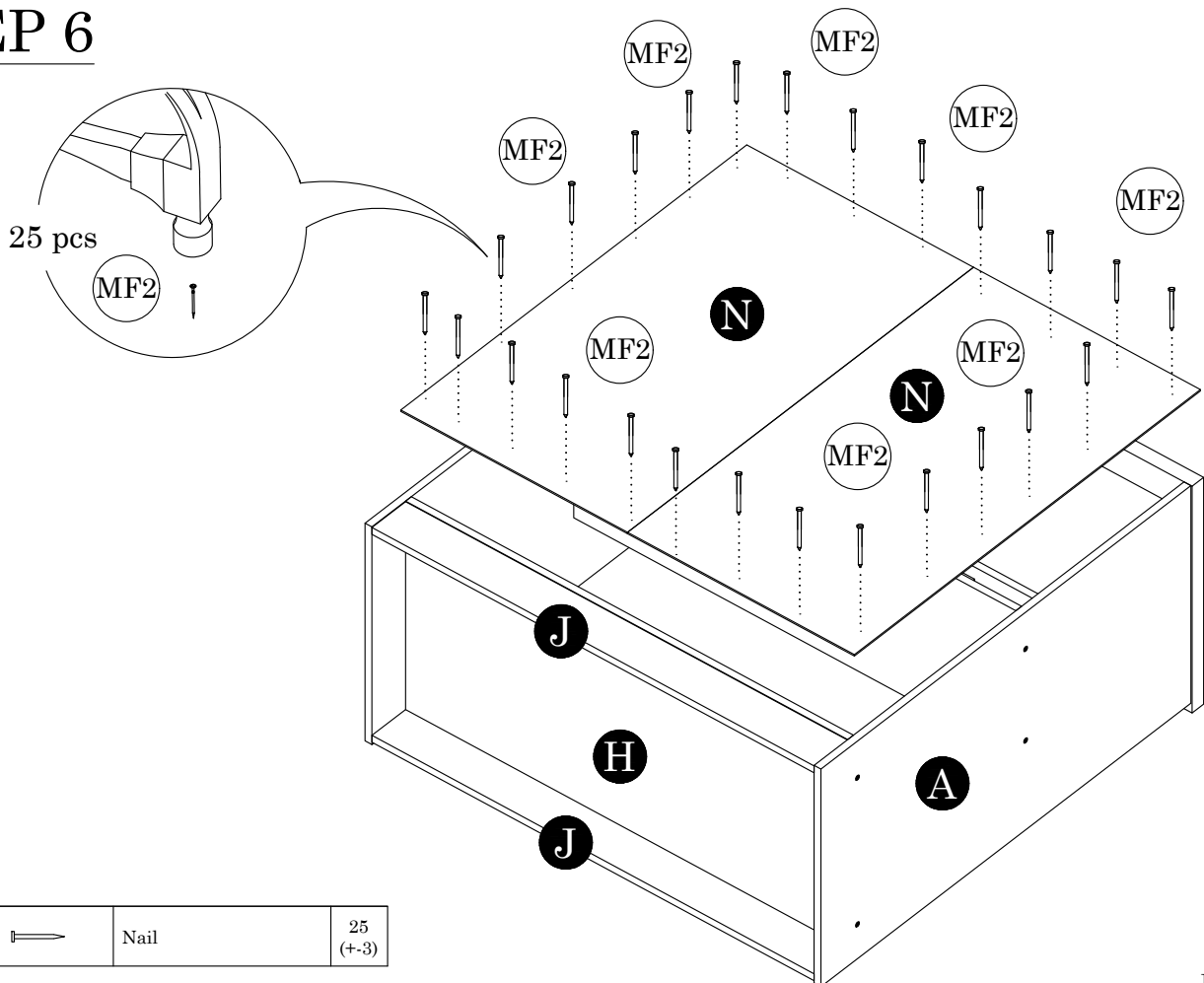
SC25		FH Screw M5 x 40mm	8
------	---	-----------------------	---



### STEP 5






## STEP 6



MF2		Nail	25 (+3)
-----	---	------	------------

STEP 7

LG1		Leg Pin	4
PL11		Small L Bracket	2
SC3		Screw M3.5mm x 14mm	4

Hit Softly

LG1


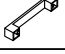


PL11

SC3

PL11

Diagram showing the assembly of the cabinet base. The base is a rectangular frame with panels labeled N, J, H, A, and LG1. The assembly involves attaching leg pins (LG1) and small L brackets (PL11) to the base using screws (SC3).

STEP 8

DH8		Door Hinges 5/8	4
HD18		Handle 128mm	2
SC3		Screw M3.5mm x 14mm	8
SC11		Screw M4 x 25mm	4

HD18

SC11

SC11

Side Panel

Door

Adjusting screw

Diagram showing the assembly of the cabinet doors and handles. The cabinet is shown with doors labeled B and E, and handles labeled HD18. The assembly involves attaching door hinges (DH8) and handles (HD18) to the doors using screws (SC3 and SC11). The side panel is also shown being attached to the cabinet frame.

Stand up