

ASSEMBLY INSTRUCTIONS

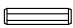


383-000011

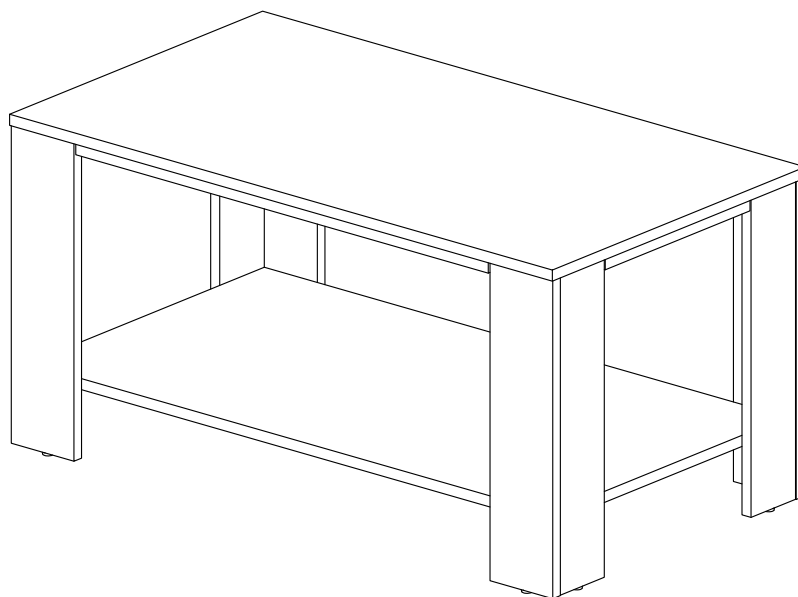


IMPORTANT

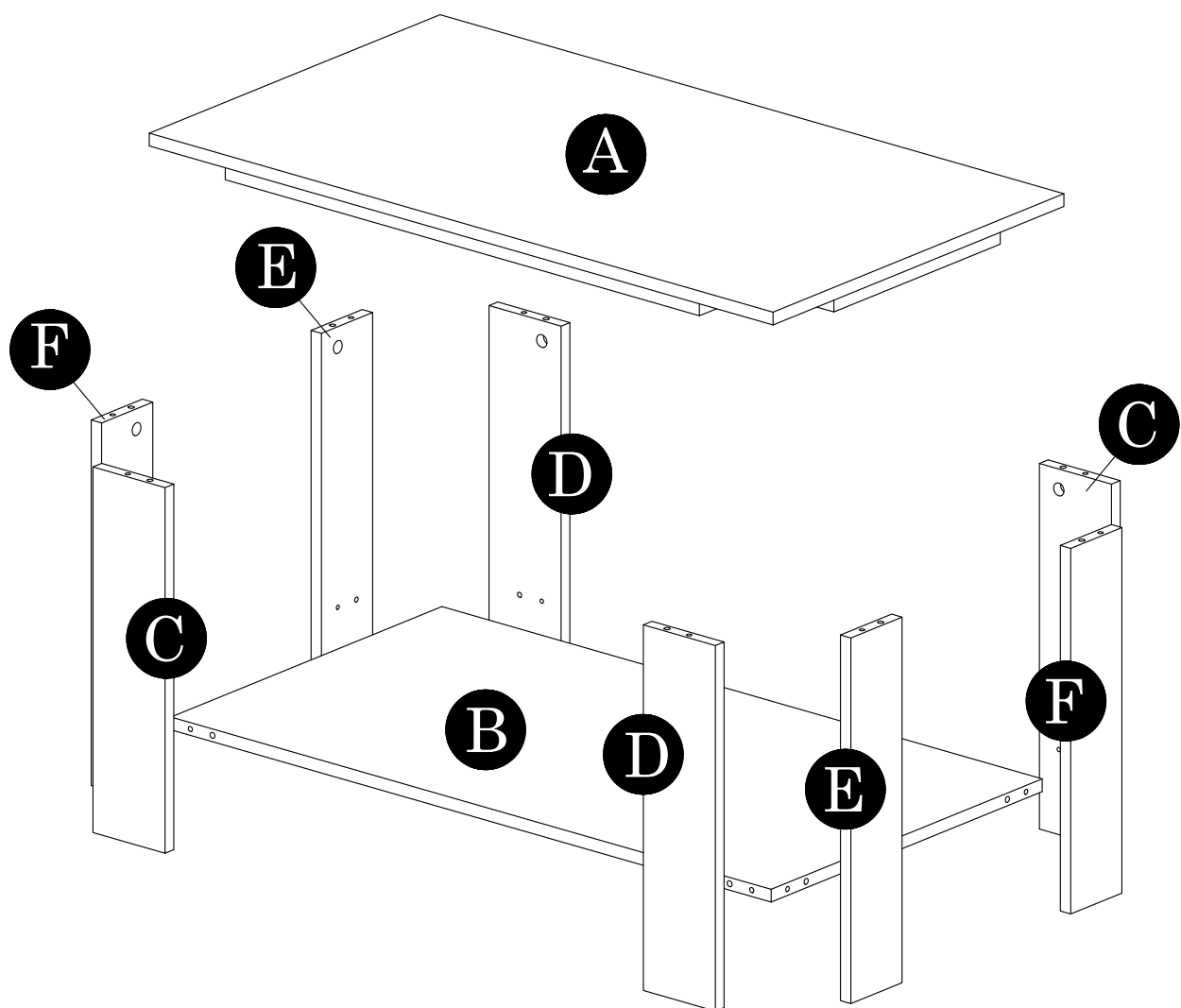
PLEASE READ BEFORE YOU CONTINUE FURTHER

1. MATERIAL USE LAMINATED PARTICLE BOARD, TO CLEAN USE SOFT, DRY CLOTH.
2. DO NOT USE DETERGENT OR CHEMICAL AVOID CONTACT WITH WATER AND DIRECT SUNLIGHT.
3. TO BE ASSEMBLED ON A SOFT, DRY, CLEAN SMOOTH SURFACE.
4. DO NOT USE ANY TOOLS OTHER THAN THOSE SHOWN.
5. USE OF POWER TOOLS TO ASSEMBLE THIS PRODUCT WILL INVALIDATE ANY CLAIM AND MAY DAMAGE THIS PRODUCT MAKING IT UNSAFE.
6. BEFORE STARTING ASSEMBLY PLEASE VERIFY IF ALL PARTS AND HARDWARE ARE INCLUDED.

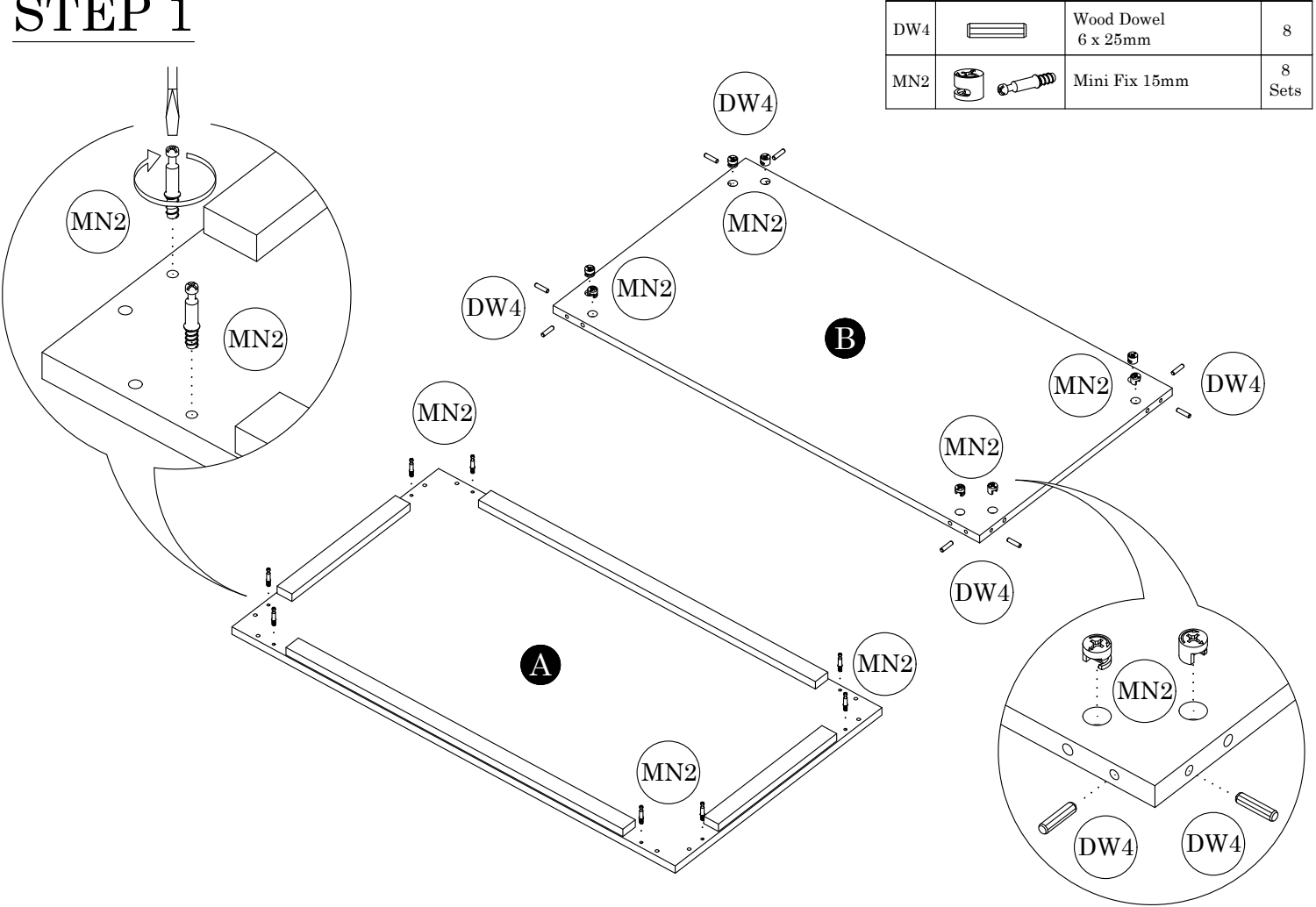
HARDWARE LIST			QTY (pcs)
DW4		Wood Dowel 6 x 25mm	16
LG1		Leg Pin	8
MN2		Mini Fix 15mm	16 Sets



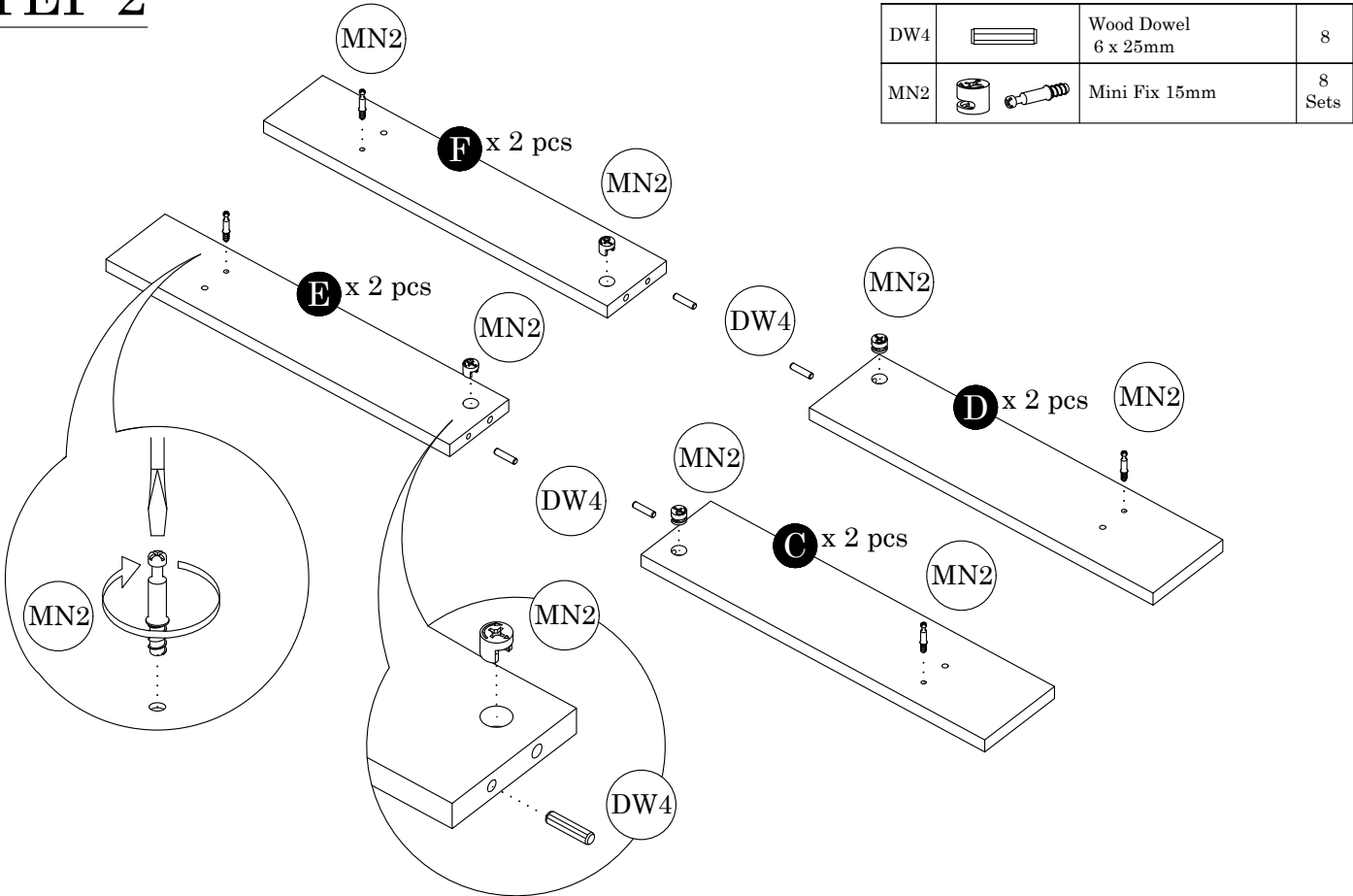
Parts List		QTY
A	Top Panel	1 pc
B	Shelf Panel	1 pc
C	Big Crossbar (L)	2 pcs
D	Big Crossbar (R)	2 pcs
E	Small Crossbar (L)	2 pcs
F	Small Crossbar (R)	2 pcs



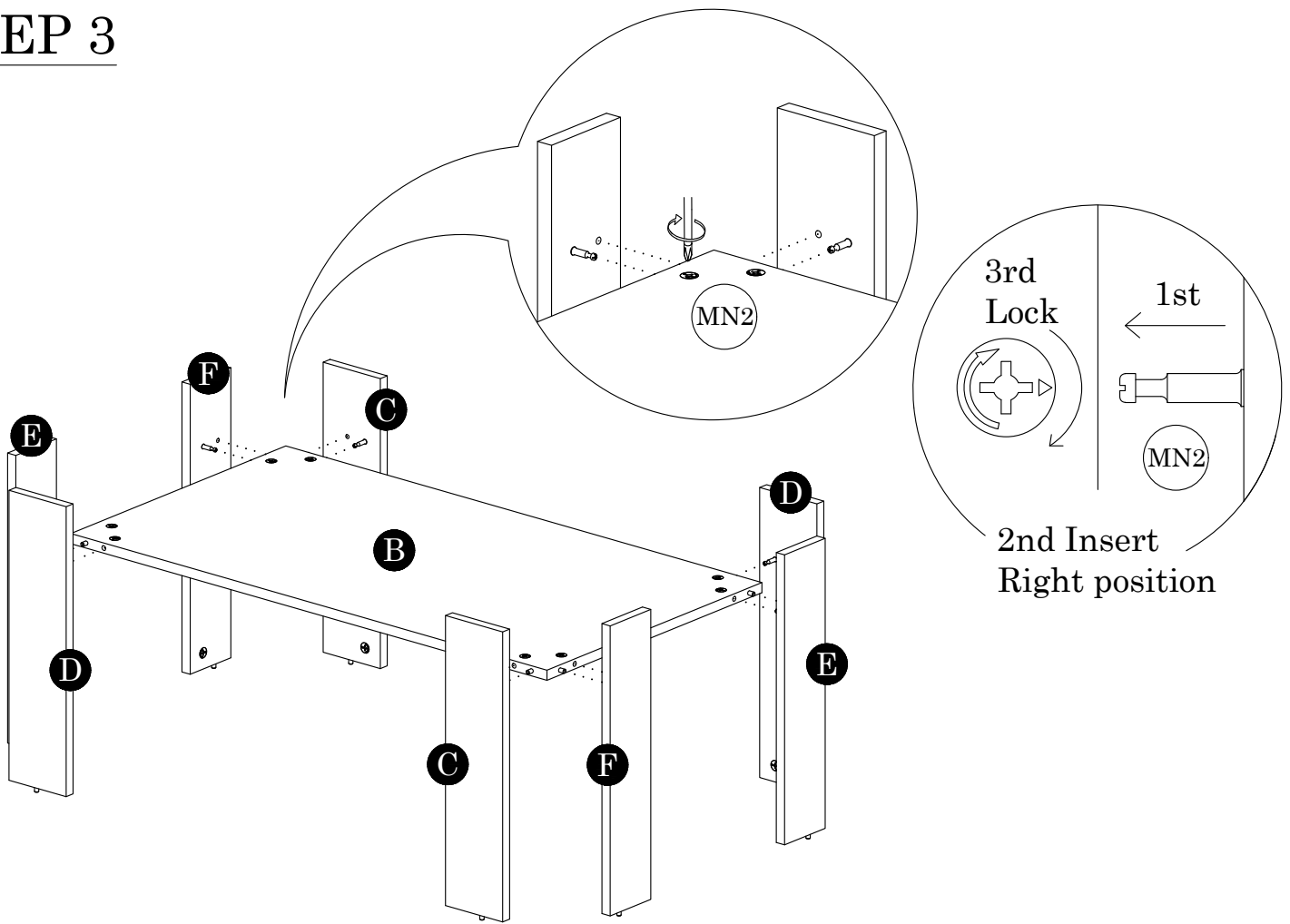
STEP 1



STEP 2



STEP 3



STEP 4

LG1		Leg Pin	8
-----	---	---------	---

