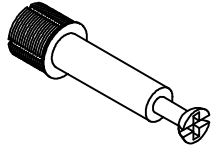


246-000021

Minifix Screw



**X24**

**A**

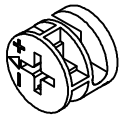
Shelves fix screw



**X8**

**E**

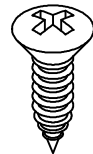
Minifix



**X24**

**B**

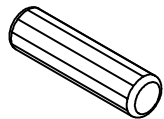
Screw



**X36**

**F**

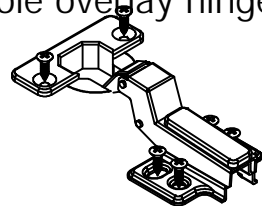
Wood Minifix



**X11**

**C**

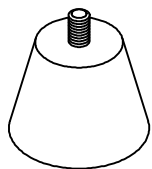
Whole overlay hinge



**X4**

**G**

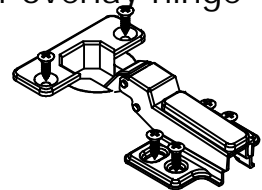
Base



**X6**

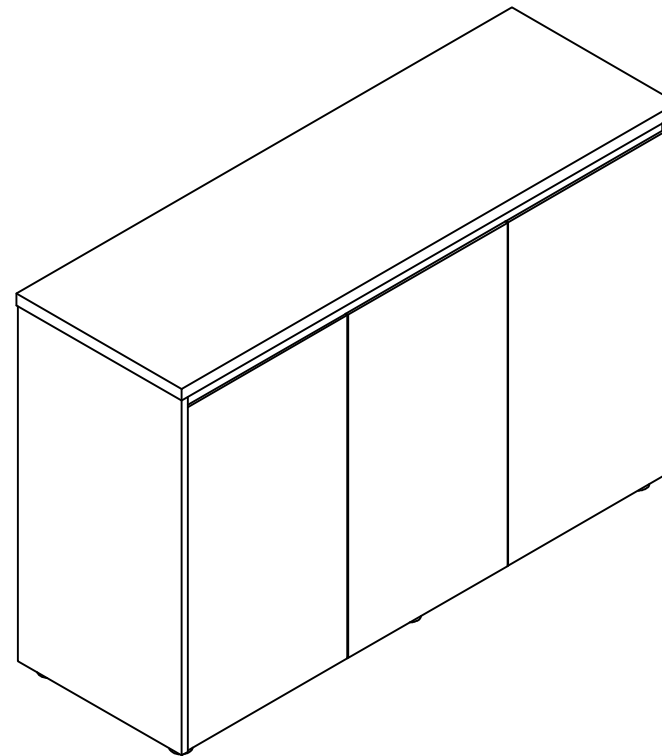
**D**

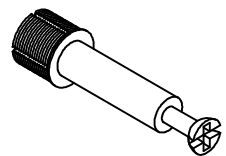
Half overlay hinge



**X2**

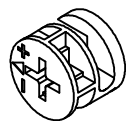
**H**





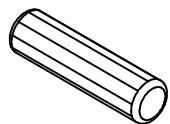
X2

A



X2

B

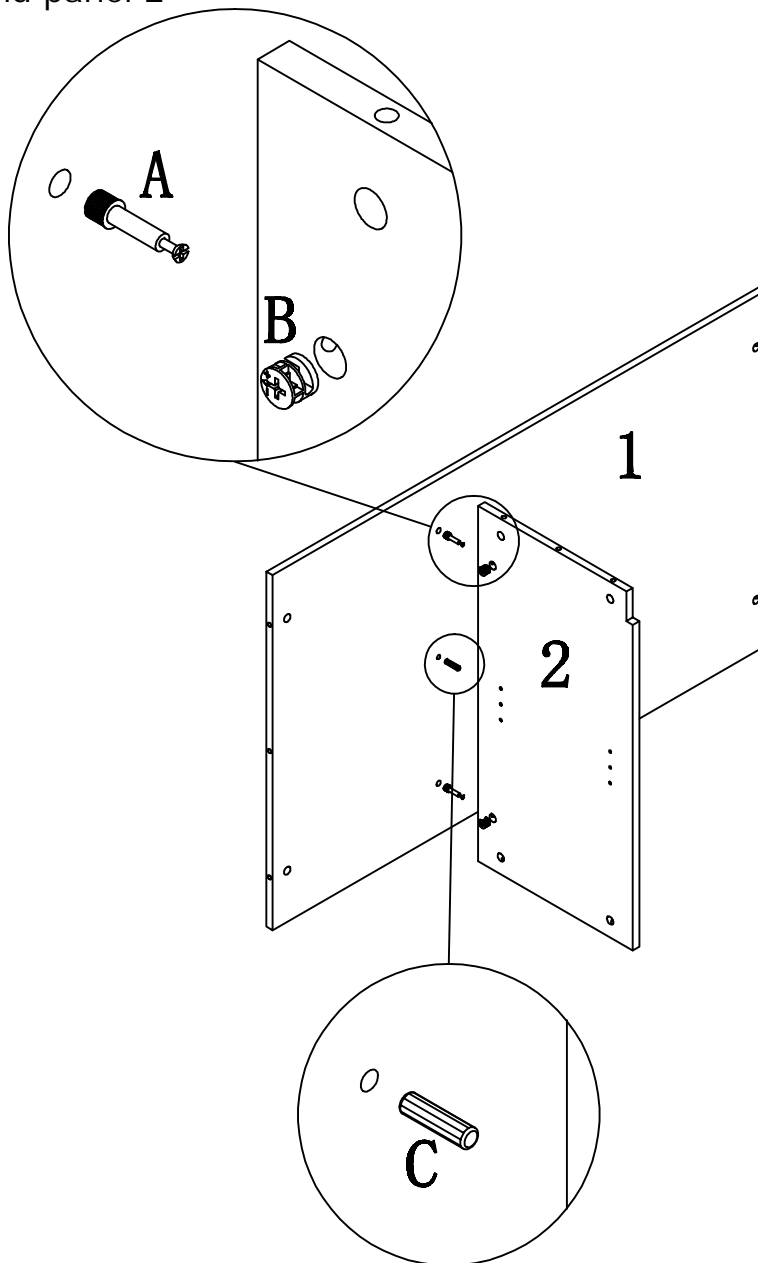


X1

C

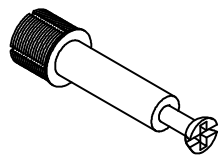
## STEP: 1

To fix the panel 1 and panel 2



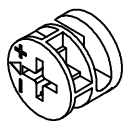
## STEP:2

To fix the panel 3



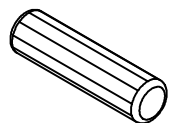
X2

A



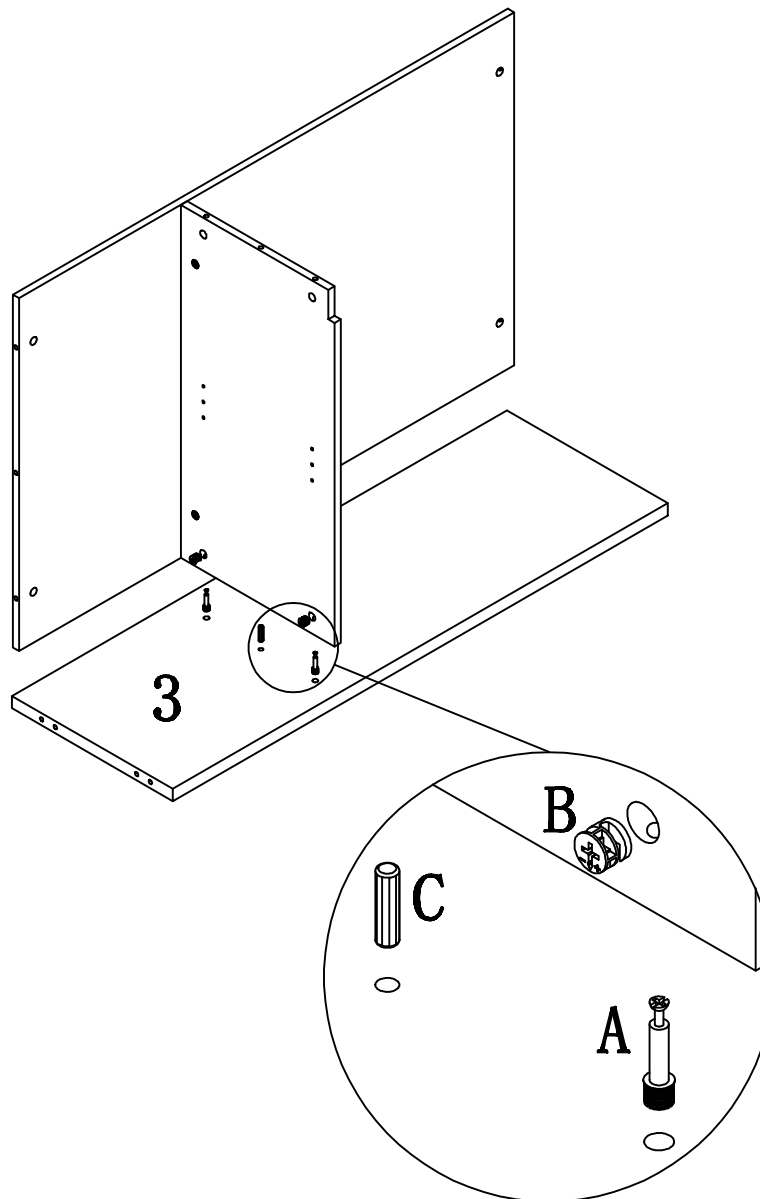
X2

B

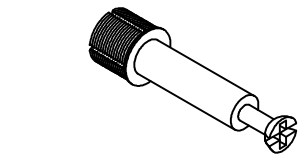


X1

C

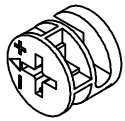


### STEP:3



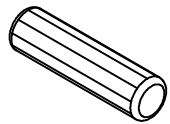
X10

A



X10

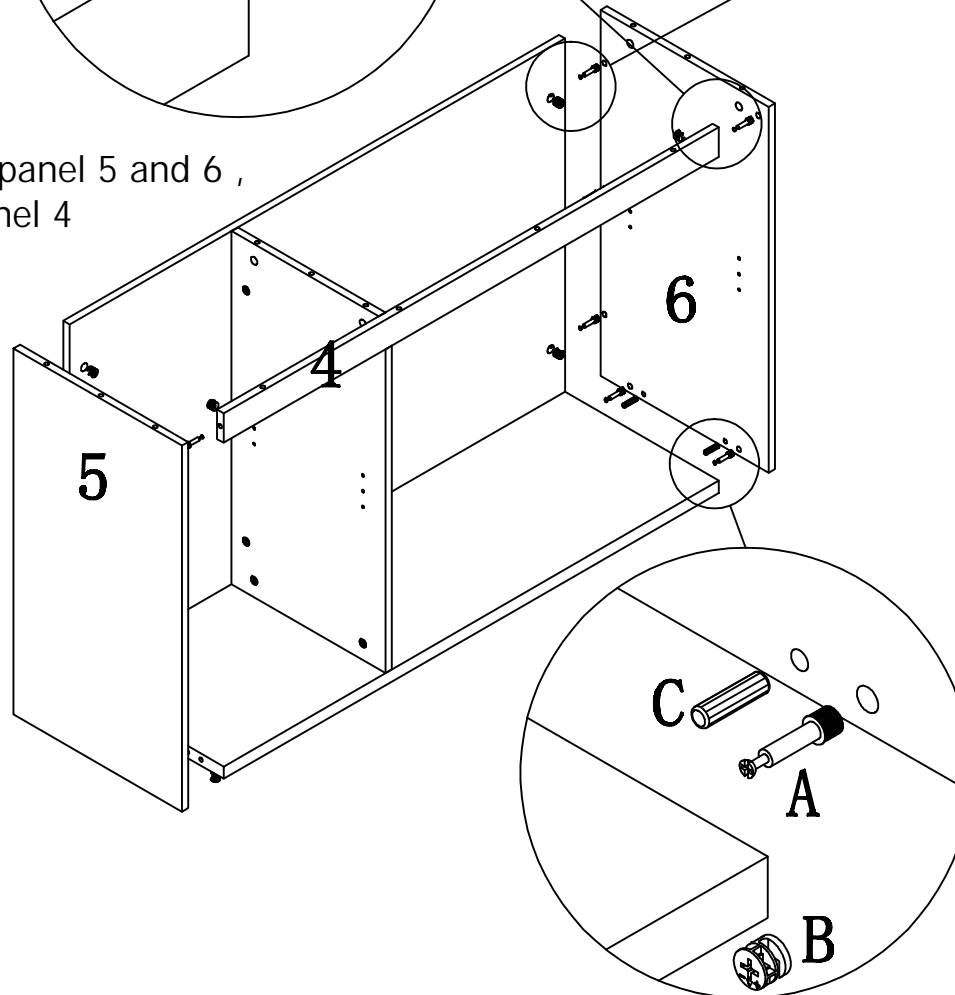
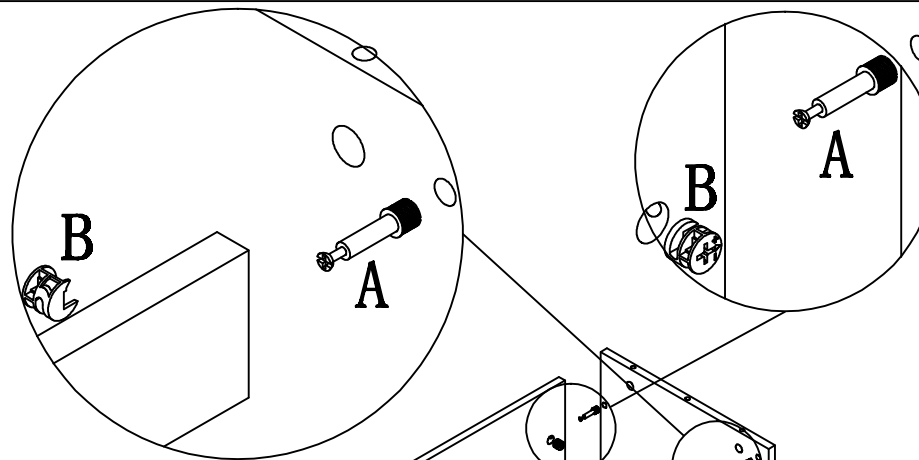
B

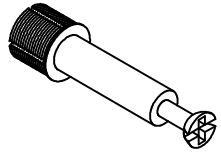


X4

C

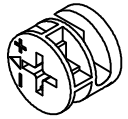
To fix the side panel 5 and 6 ,  
then fix the panel 4





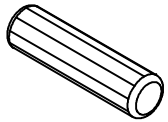
X8

A



X8

B

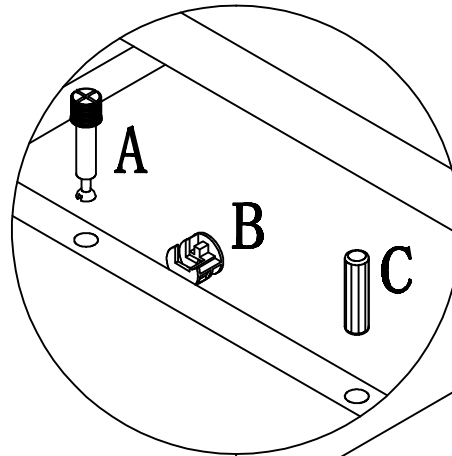


X3

C

## STEP:4

To fix the top  
panel 7



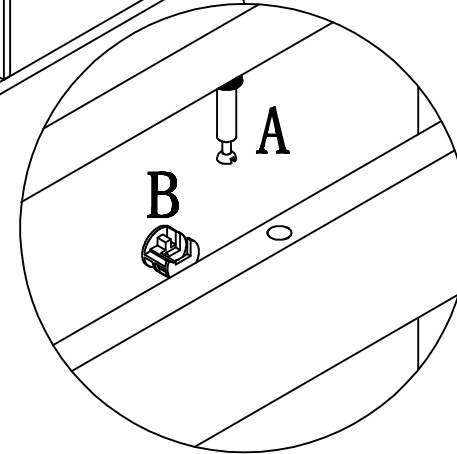
A

B



C

7



A

B

To fix the base D  
and shelves fix screw E

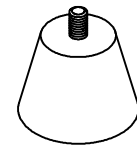
To fix the base D  
and shelves fix screw E



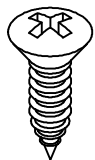
D



E

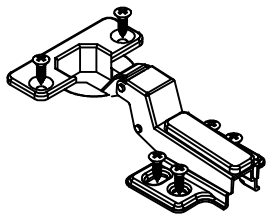


D



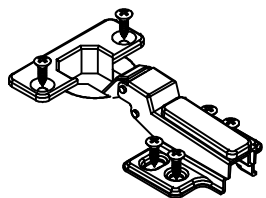
X36

F



X4

G

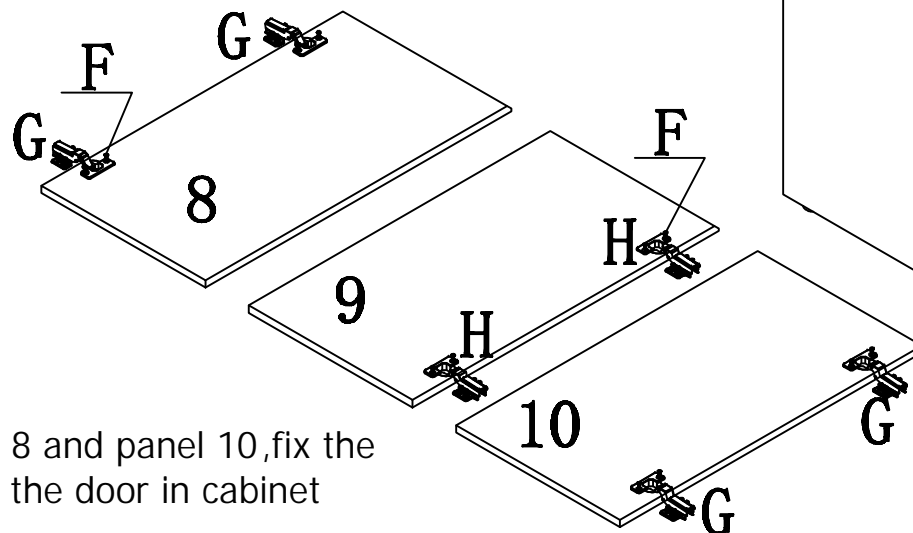
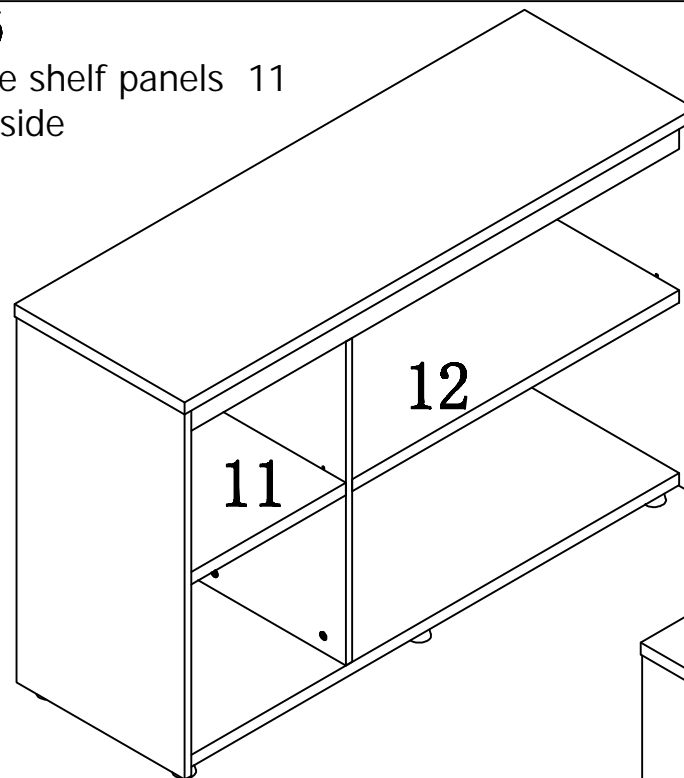


X2

H

**STEP:6**  
To put the shelf panels 11  
and 12 inside

**FINISH**



To fix the hinge G on panel 8 and panel 10, fix the hinge H on panel 9, then fix the door in cabinet