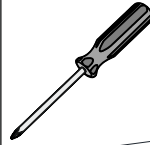
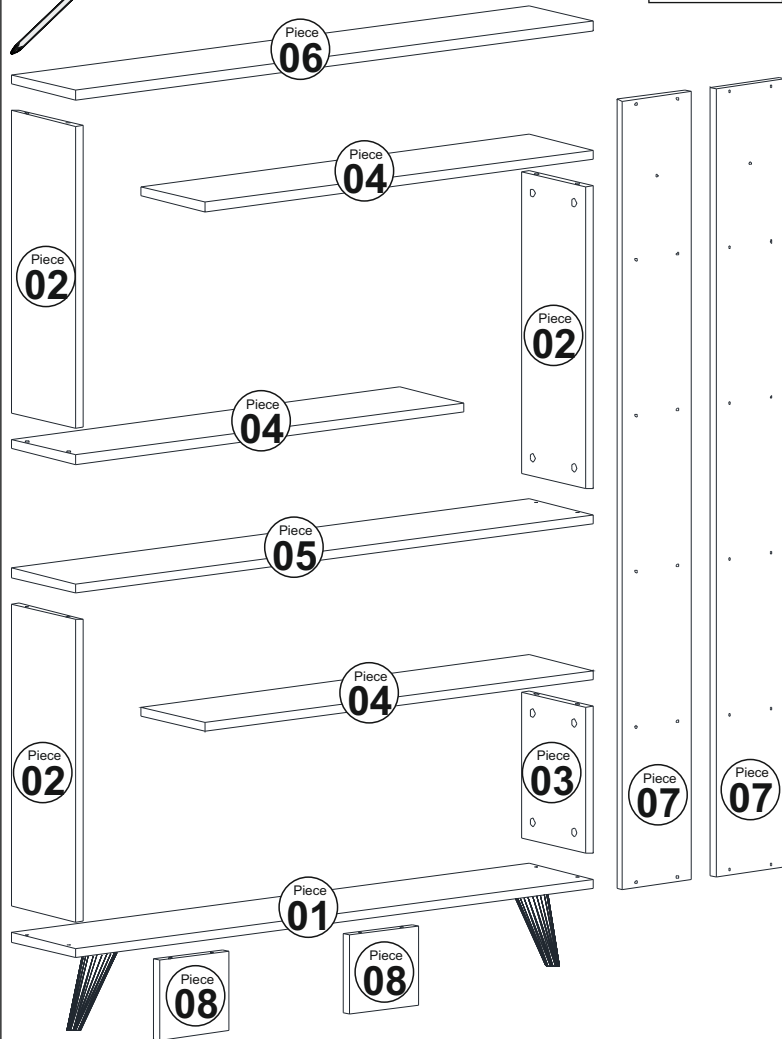




The necessary tools (not included)



P 1



ACCESSORY LIST

Minifix  A01 20x	Minifix Screw  A02 20x	4x70 Screw  A45 2x	8mm Pin  A08 2x
4x50 Screw  A09 24x	Retro Leg  A46 2x	3,5x18 Screw  A10 8x	Mini x Tap  A04 20x

ASSEMBLY PIECES

NO	PART CODE	PIECE	LENGHT	WIDHT	THICKNESS
1	00106.01	1	1200	196	18
2	00106.02	3	570	196	18
3	00106.03	1	276	196	18
4	00106.04	3	900	196	18
5	00106.05	1	1200	196	18
6	00106.06	1	1200	196	18
7	00106.07	2	1488	160	18
8	00106.08	2	150	160	18

Dear Customer,

The product you bought was subjected to all sorts of test and control before sending out to you. Even in this situation, sometimes happen that some component is damaged durin the transportation. In such please do not sent the whole article back us. Just request/order the damaged part. While requesting the required part, describe it exactly by looking to service card. Missing part will be sent you as soon as possible. Before start assembling , please check the whole components and accessories according to the lists. After being sure that every part and accessory are okay and right, start assembling. Before start assembling, please clean all the components with a damp cloth. If you bought more than one product, to prevent confusion be sure that you completed the rst product. Then start the other product's assembling.

Never drag the products. While carrying, disassociate and lift the product and carry with minimum 2 people. For long distances carry the product with the package.

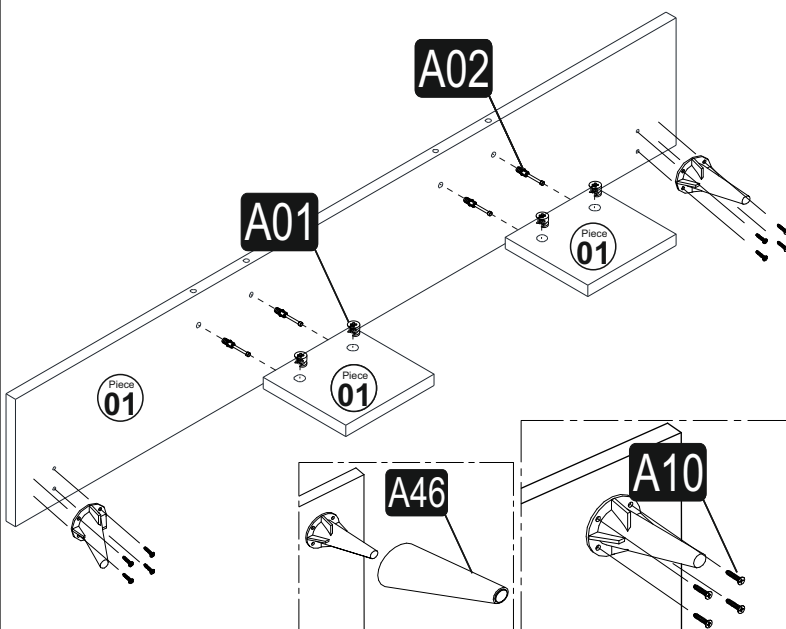
It is very easy to clean the surfaces of your product. It is enough to wipe a damp and soapy cloth or other household cleaners.

Do not directly contact your furniture with excessive heat, cold and humidity because the product can be affected.

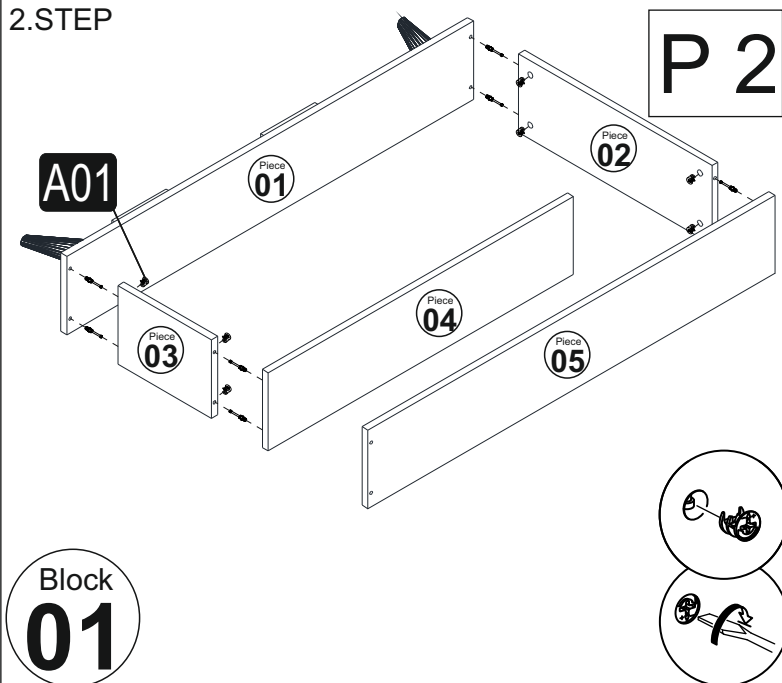
Assembly Manual

Jane Bookcase

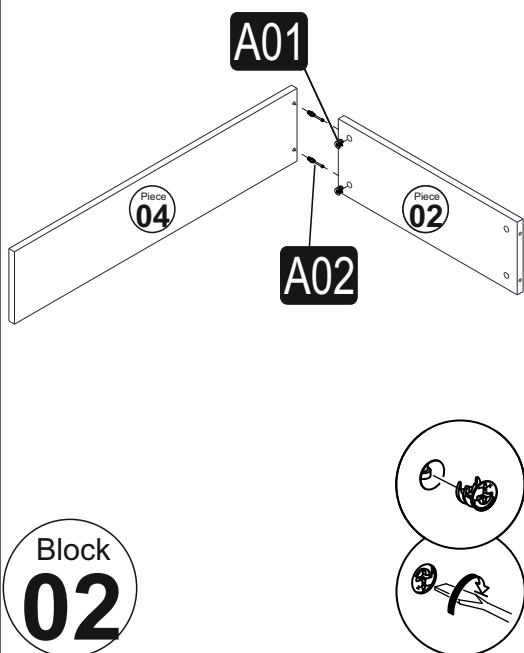
1.STEP



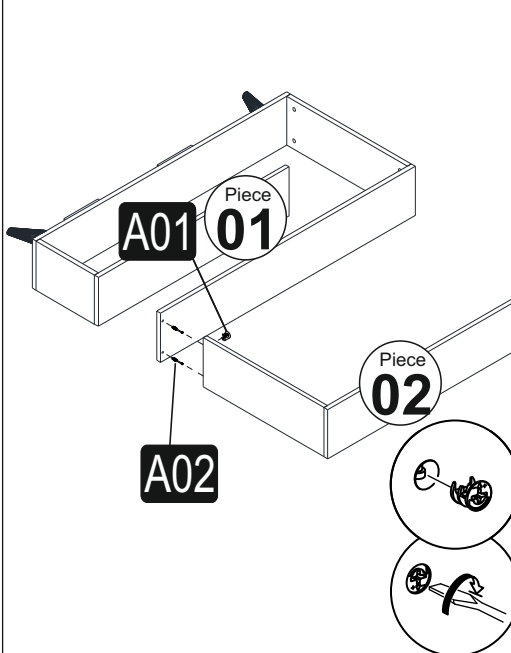
2.STEP



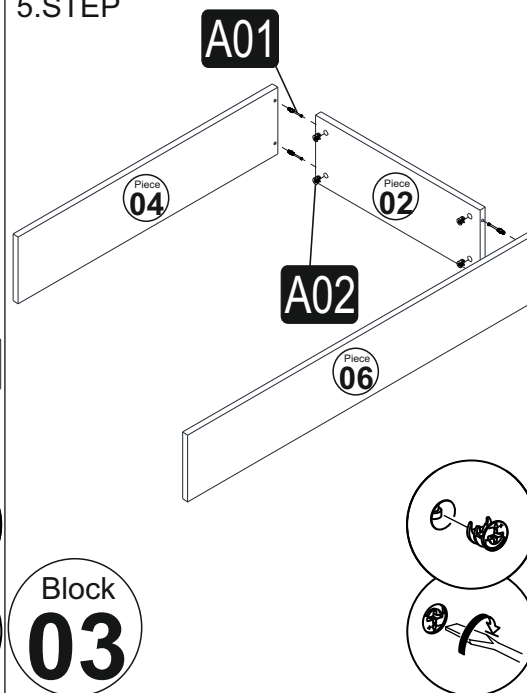
3.STEP



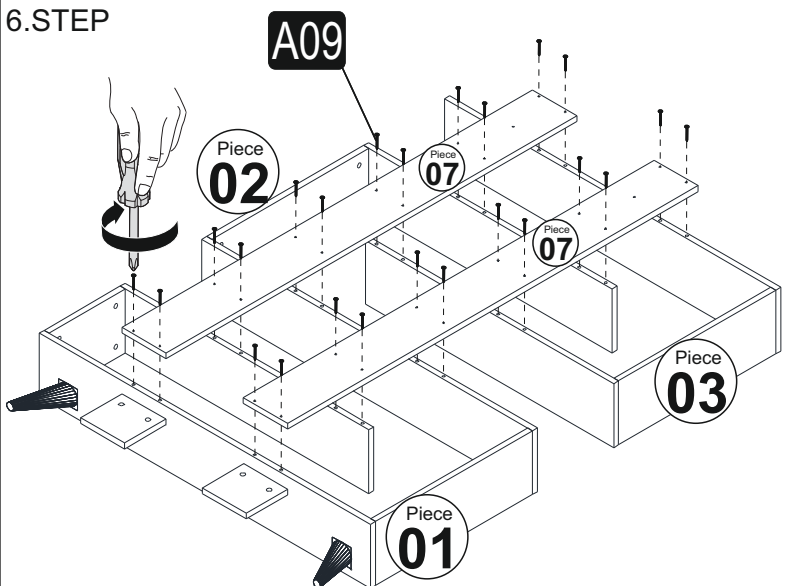
4.STEP



5.STEP



6.STEP



7.STEP

