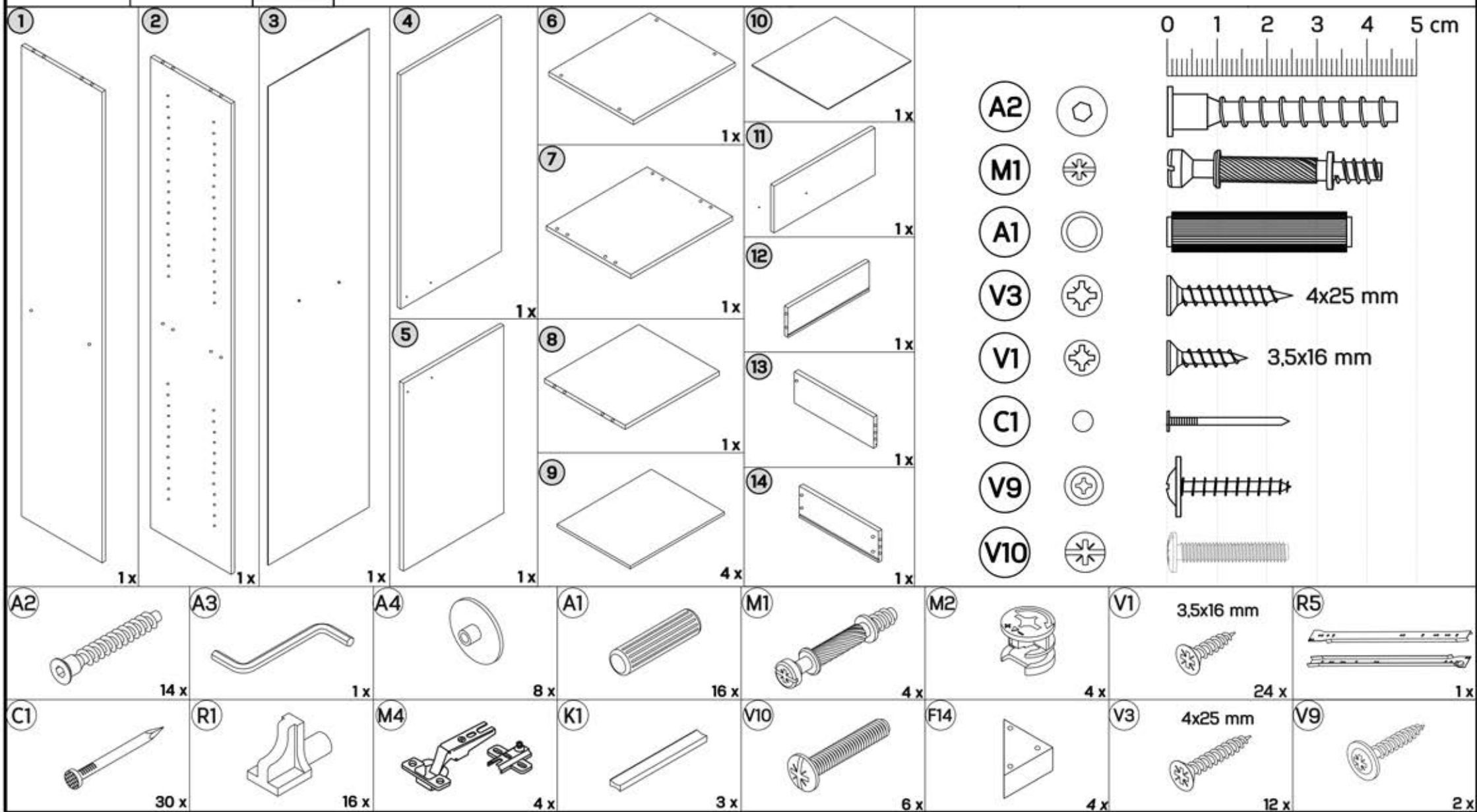
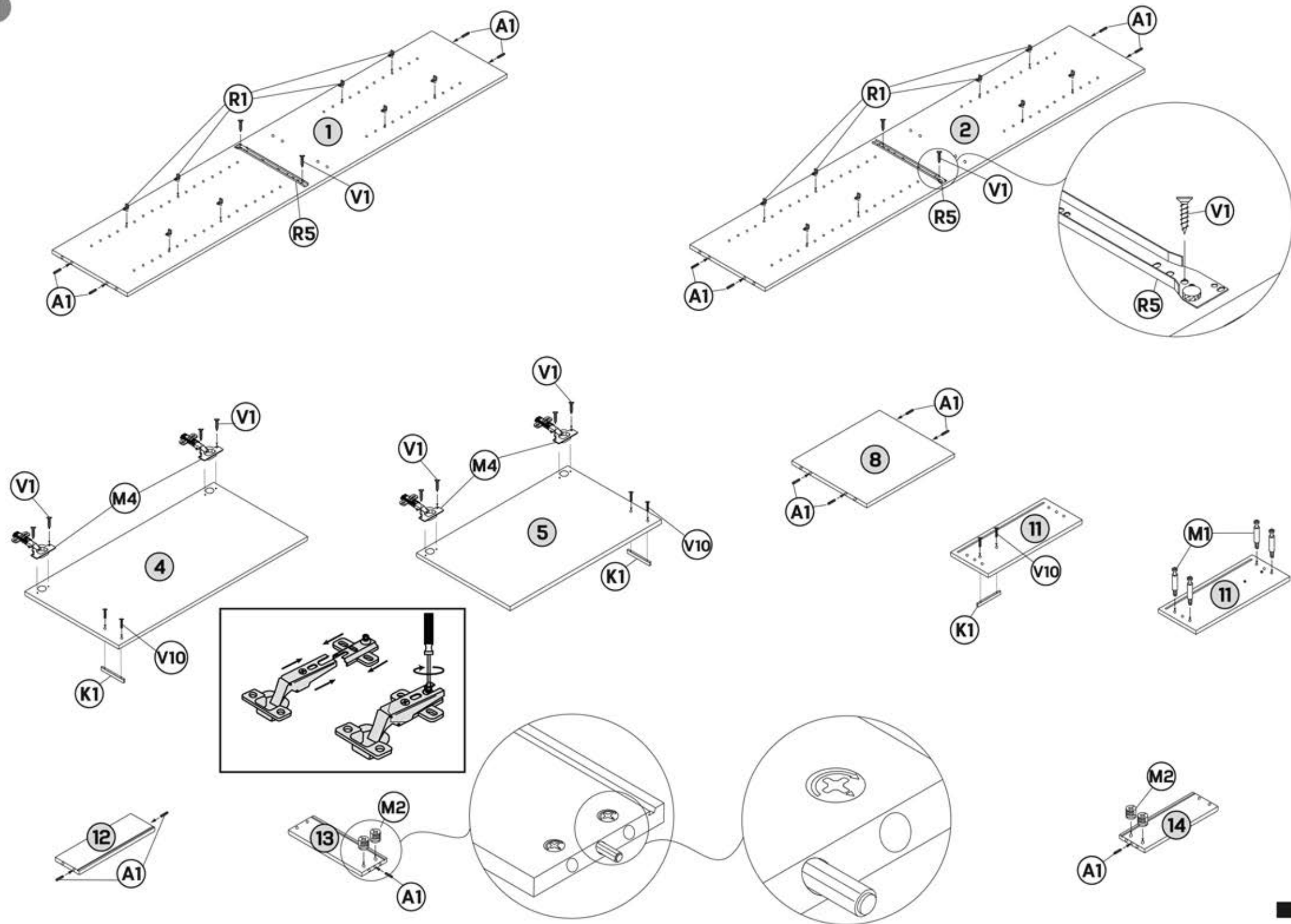


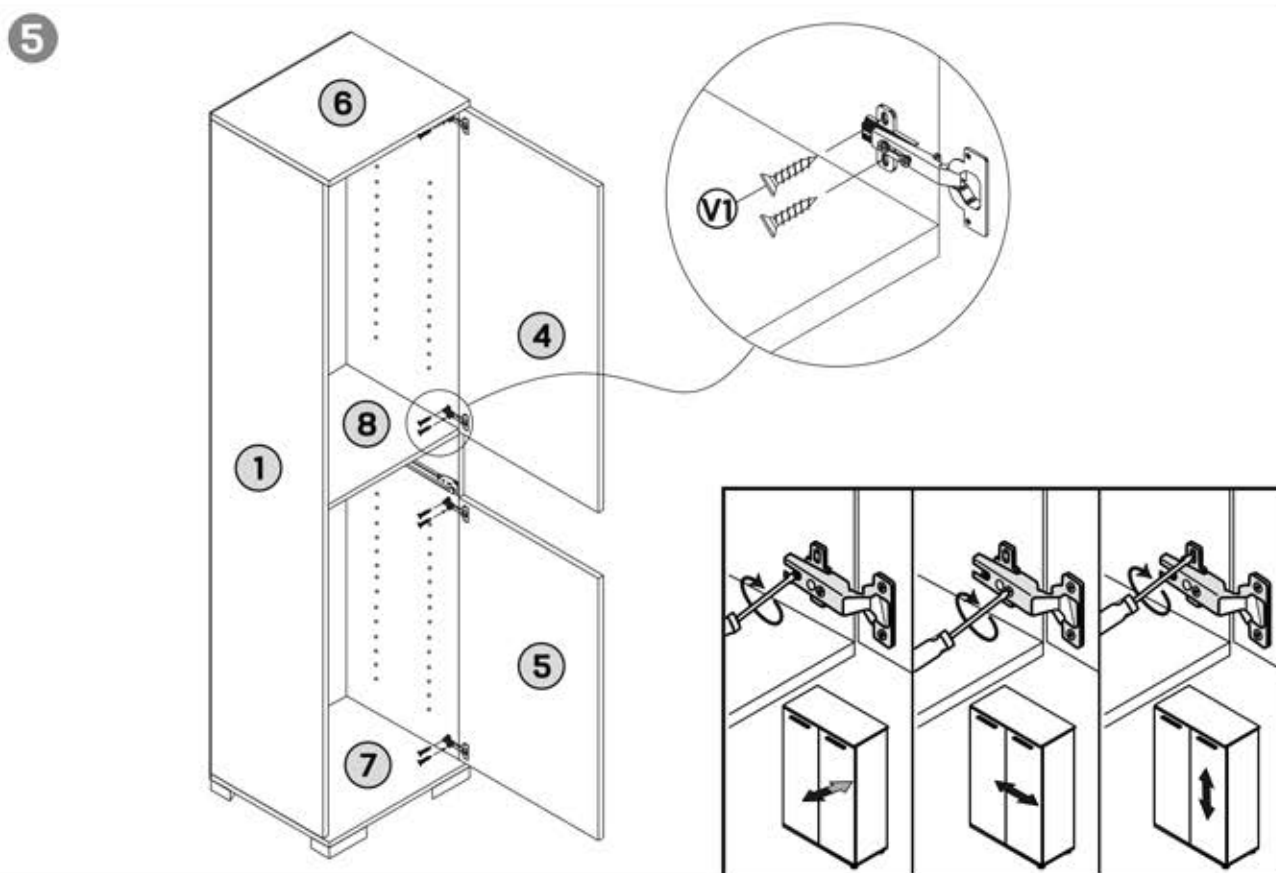
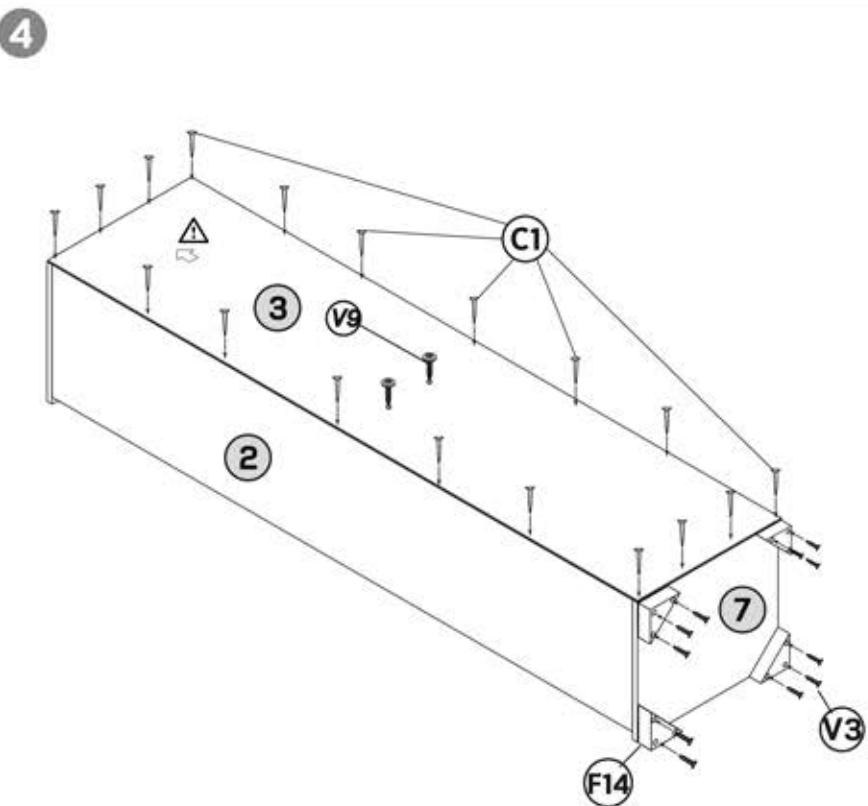
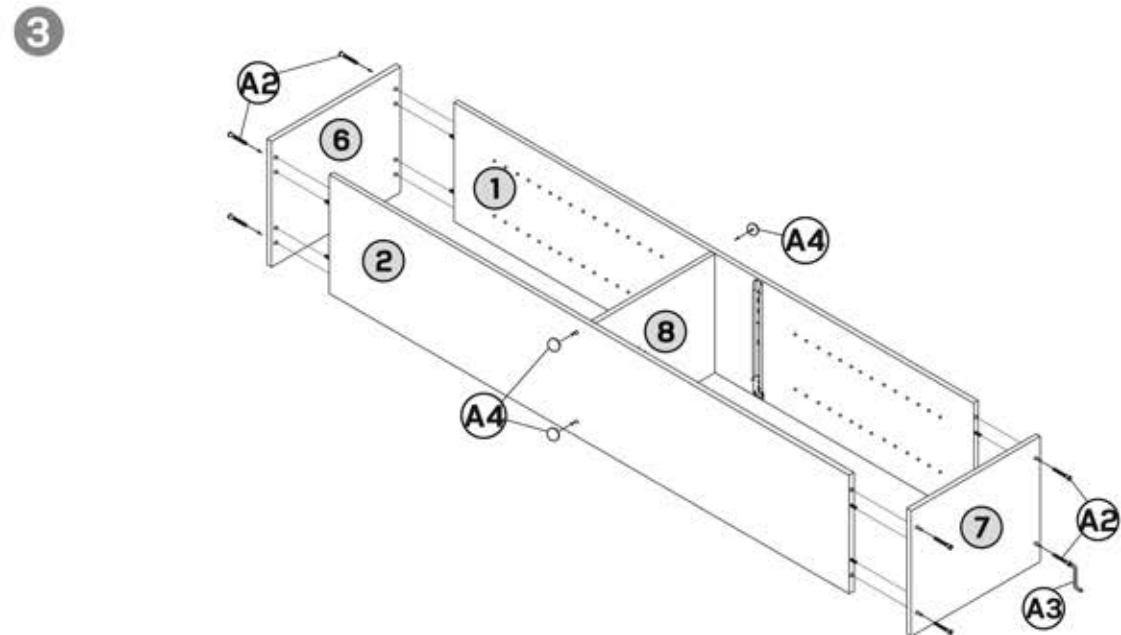
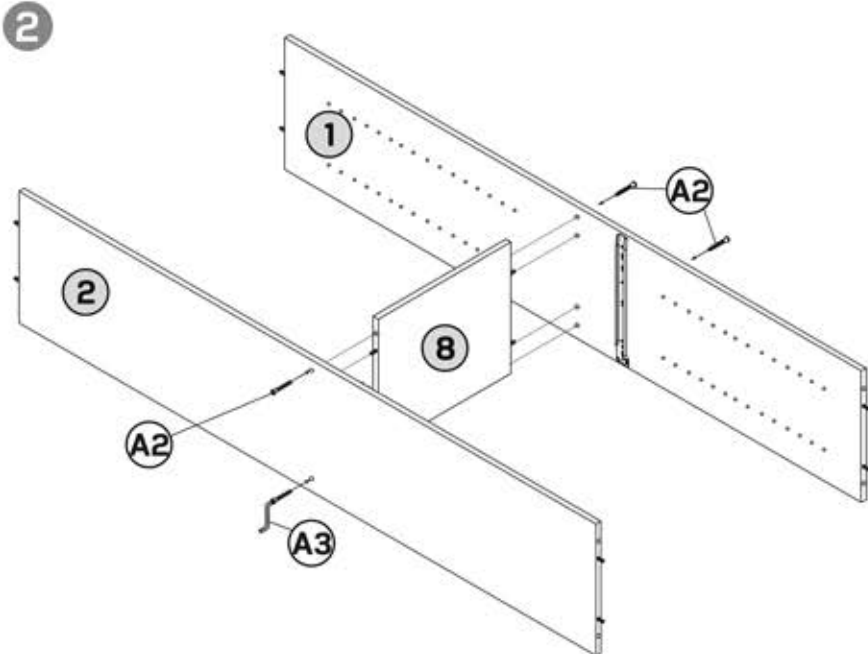
**EN:** For an easy and enjoyable assembly:  
Please read the assembly chart completely. Remove all the parts from the carton box and place them on a smooth surface. Make sure you have exactly all the parts and tools listed in on the chart ready. Start assembling the products following the steps on the chart. Use only the tools provided within the product, a screwdriver and a hammer. Please keep the assembly chart for future reference.

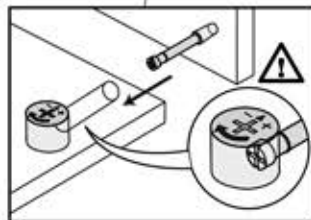
# 039-000169



1







A circular inset diagram showing a close-up of the wall bracket being secured to the wall. A screw, labeled 'V1', is shown being driven into the bracket. The bracket is a metal plate with a slot for the cable and a hole for the screw. The wall is represented by a textured surface.